



Working Instruction, Mechanical

Applicable for W760

CONTENTS

1	Introduction	3
1.1	View of W760	3
1.2	Tools and Equipment	3
1.3	General Cautions	4
1.4	Adhesives.....	4
1.5	Using Hand and ESD Protection	4
1.6	Protection of Displays, Lenses, and Windows	4
1.7	Acceptable Pry Tools	4
2	Disassembly.....	5
2.1	Standard Disassembly	6
2.1.1	Battery Cover Removal	6
2.1.2	Battery Removal.....	6
2.1.3	Label Removal	7
2.2	Back Half.....	8
2.2.1	Upper Back Cover Removal.....	8
2.2.2	Volume Key Removal.....	9
2.2.3	Back Screw Removal	9
2.2.4	Keyboard Removal.....	11
2.2.5	Back Frame Removal.....	12
2.2.6	Circuit Board Removal	14
2.3	Front Half.....	17
2.3.1	Front Cover Removal	17
2.3.2	LCD Removal	19
2.3.3	Ear Speaker Housing Removal	20
2.3.4	Front Screw Removal.....	21
2.3.5	Inner Screw Removal	22
2.3.6	Front Frame Removal	22
3	Reassembly	24
3.1	Front Half.....	25
3.1.1	Front Frame Installation	25
3.1.2	Inner Screw Installation	26
3.1.3	Front Screw Installation	26
3.1.4	Ear Speaker Housing Installation	27
3.1.5	LCD Installation	29
3.1.6	Front Cover Installation	30
3.2	Back Half.....	33
3.2.1	Circuit Board Installation	33
3.2.2	Back Frame Installation	35
3.2.3	Keyboard Installation	37
3.2.4	Back Screw Installation	38
3.2.5	Volume Key Installation	38



3.2.6	Upper Back Cover Installation	39
3.3	Standard Installation.....	40
3.3.1	Label Installation	40
3.3.2	Battery Installation	40
3.3.3	Battery Cover Installation	41
4	Replacement.....	42
4.1	Antenna Assembly Replacement	42
4.2	A/B Button Replacement	45
4.3	Back Frame Replacement.....	46
4.4	Battery Replacement.....	46
4.5	Battery Cover Replacement	46
4.6	Camera Replacement	46
4.7	Camera Cover Replacement.....	47
4.8	Chin Cover Replacement	48
4.9	Coax Ground Replacement.....	49
4.10	Ear Speaker Replacement	50
4.11	Ear Speaker Gasket Replacement.....	51
4.12	Ear Speaker Housing Replacement.....	51
4.13	Front Cover Replacement	52
4.14	Front Frame Replacement	53
4.15	Hinge Replacement.....	54
4.16	Keyboard Replacement.....	55
4.17	Keypad FPC Replacement.....	55
4.18	LCD Replacement	60
4.19	Liquid Intrusion Indicator Replacement	61
4.20	M2 Cover Replacement.....	62
4.21	Microphone Gasket Replacement	64
4.22	Navigation Keypad Replacement	66
4.23	NeoBon Flex Replacement	70
4.24	RF Plug Replacement	76
4.25	Side Key Flex Replacement	77
4.26	SIM Label Replacement	79
4.27	Speaker Box Replacement.....	80
4.28	Upper Back Cover Replacement.....	80
4.29	Vibrator Replacement.....	81
4.30	Volume Key Replacement.....	81
4.31	Walkman Key Replacement	82
5	Country of Origin Barcodes for Brazil/VIVO Labels	84
6	Revision History	84



1 Introduction

1.1 View of W760



1.2 Tools and Equipment

The following tools and equipment should be available while performing the procedures.

TOOLS

- Style 2A Tweezers – Rounded Tip
- Nylon Pointer
- Torque Driver
- Dental Hook
- Plectrum
- JCIS-0 bit
- Driver Bit Phillips 000



ESD EQUIPMENT

Protect the phone from ESD damage whenever it has been opened:

Minimum requirements are:

- ESD wristband
- ESD gloves
- ESD mat





LABEL EQUIPMENT

The following equipment is required for generating a new label:

- Zebra printer connected to computer



1.3 General Cautions

The following cautions are considered to be generic for all products and will not be repeated in the Disassembly, Reassembly, and Replacements sections:

- **SWITCH OFF THE PHONE AND REMOVE ANY MEMORY STICK BEFORE THE START OF THE DISASSEMBLY!**
- **KEEP ALL CONTACT SURFACES CLEAN!**
- **BE CAREFUL WHEN USING TOOLS LIKE THE DENTIST HOOK, TWEEZERS, PRY TOOLS, ETC. TO AVOID SCRATCHES OR DAMAGE TO THE EXTERIOR AND INTERIOR PARTS OF THE PHONE!**
- **BE CAREFUL NOT TO DAMAGE ANY CONTACT SPRINGS!**
- **REMEMBER TO REMOVE THE PROTECTION FILMS ON NEW PARTS SUCH AS THE FRONT COVER AND LCD!**
- **NEVER TOUCH THE DISPLAY GLASS!**

1.4 Adhesives

Use a dentist hook, the tweezers, and/or a nylon pointer to remove old adhesives. Clean the surface with isopropyl alcohol before attaching new adhesives.

1.5 Using Hand and ESD Protection

When handling this product, keep all surfaces clean of dirt, dust, debris, and hand oil. Use appropriate ESD precautions when working on this product. The use of finger cots or gloves, an ESD mat, and an ESD wrist strap are required at minimum.

1.6 Protection of Displays, Lenses, and Windows

Any time the screen portion of a display assembly, the windows of a display cover, or a camera lens is unprotected and exposed, add a protective film over the exposed part to reduce the amount of dust, finger prints, debris, and/or damage that the part may obtain.

1.7 Acceptable Pry Tools

Whenever the phrase “pry tool” is used, a nylon pointer, a plectrum, or a front opening tool may be used depending on the user’s preference.

2 Disassembly

Disassemble in the following order:

Standard

- Battery Cover (1)
- Battery (2)
- Label (3)

Back Half

- Upper Back Cover (4)
- Volume Key (5)
- Back Screw (6)
- Middle Screws (7)
- Keyboard (8)
- Back Frame (9) from Hinge
- Circuit Board (10)

Front Half

- Front Cover (11)
- LCD (12)
- Ear Speaker Housing (13)
- Front Screw (14)
- Inner Screw (15)
- Front Frame (16) from Hinge (17)



2.1 Standard Disassembly

This section must be completed before disassembling either half of the phone.

2.1.1 Battery Cover Removal

Lift up on the battery cover at its notch.



Remove battery cover.

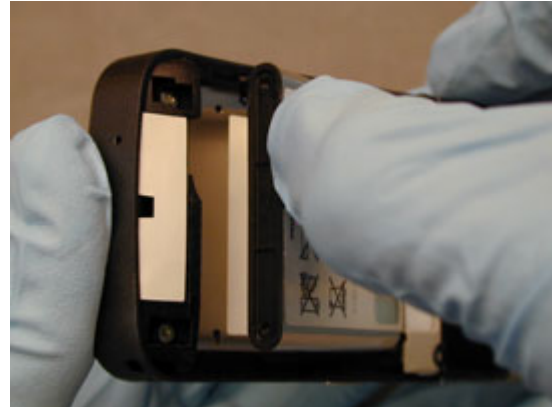


2.1.2 Battery Removal

Using the indicated notch, lift the lower portion of the battery from the battery cavity.



Remove battery.



2.1.3 Label Removal

Peel up the bottom right corner of the label using round tipped tweezers.

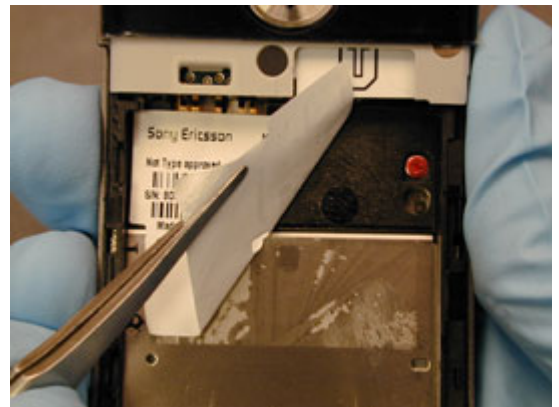


Peel the label off.

NOTE: DO NOT LET THE LABEL ADHESIVE TOUCH THE BATTERY CONTACTS.

Clean off any adhesive residue from the battery cavity using alcohol and a lint-free wipe.

NOTE: THE LABEL THAT HAS BEEN REMOVED SHOULD NOT BE REUSED!



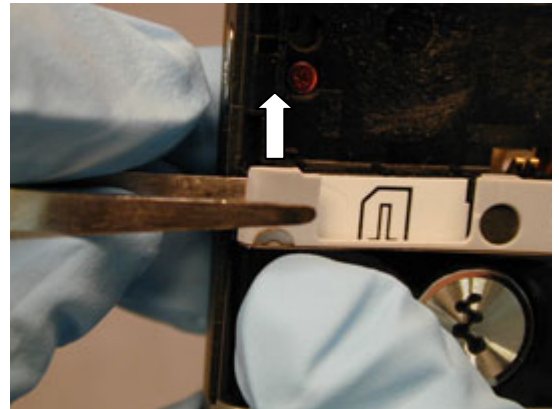
2.2 Back Half

2.2.1 Upper Back Cover Removal

Insert one end of the round tipped tweezers between the upper back cover and the frame and push on the lower left latch as shown.

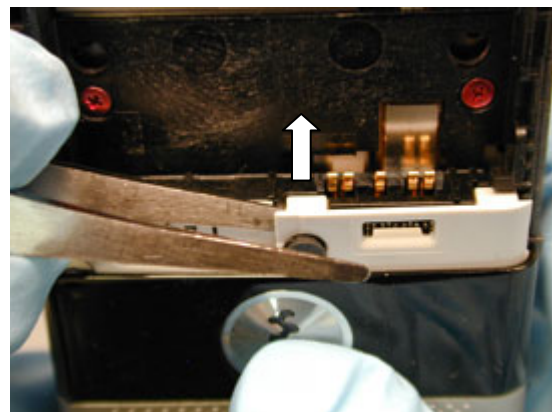


Repeat for the right side latch.

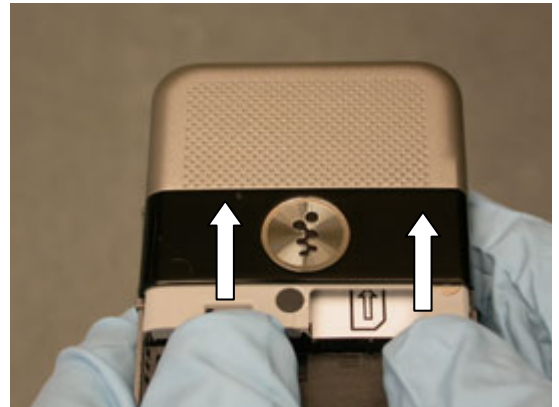


Insert one tip of the round tipped tweezers between the upper back cover and the frame on the SIM card holder side of the middle latch and push to release it.

NOTE: THE RF PLUG MAY FALL OUT.

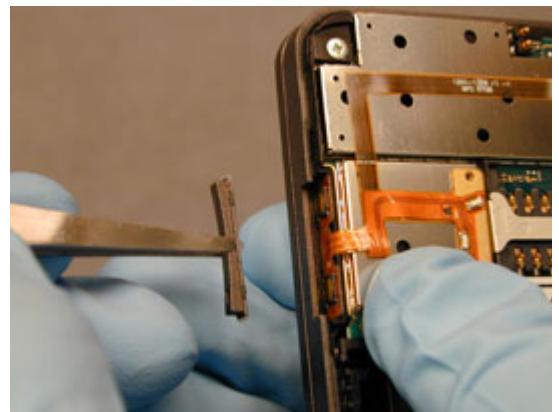


Push up on the free end of the upper back cover to release it.



2.2.2 Volume Key Removal

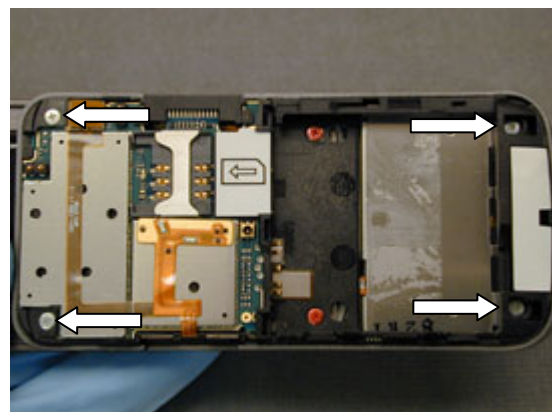
Lift the side key from its opening using round tipped tweezers.



2.2.3 Back Screw Removal

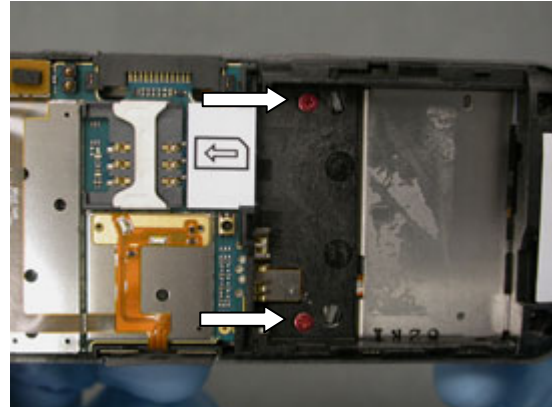
Remove the four back screws using a Phillips 000 bit.

NOTE: DO NOT REUSE SCREWS!



Remove the two middle screws using a Phillips 000 bit.

NOTE: DO NOT REUSE SCREWS!





2.2.4 Keyboard Removal

Open the phone.

Insert one tip of the round tipped tweezers between the keyboard and the hinge.



Lift up on the keyboard and peel it off.

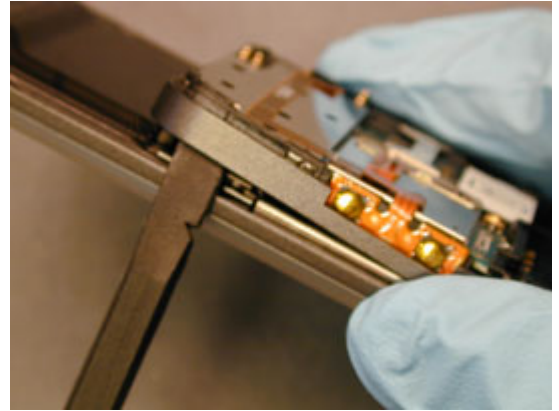
NOTE: CLEAN OFF ANY ADHESIVE RESIDUE.

NOTE: DO NOT REUSE THE KEYBOARD.

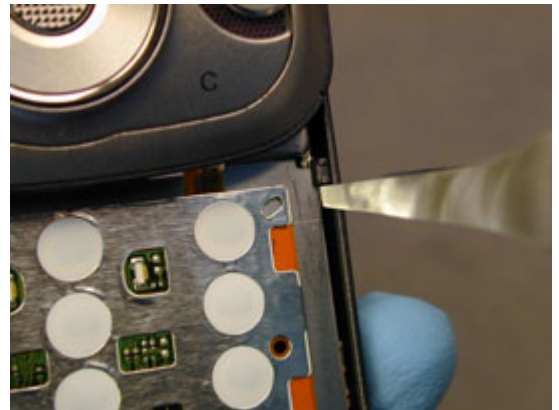


2.2.5 Back Frame Removal

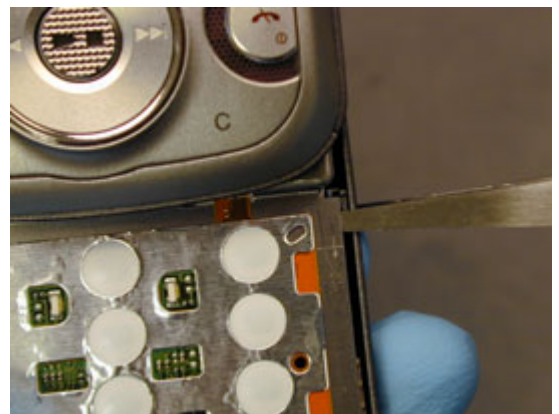
Pry the upper right back frame latch from the hinge while holding the phone as shown.



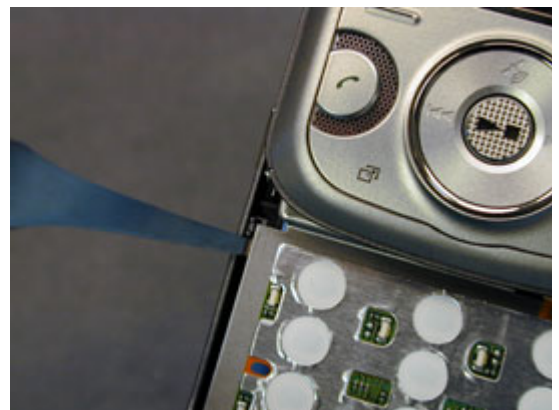
Insert the tip of round tipped tweezers between the back frame and the hinge just below the right latch as shown.



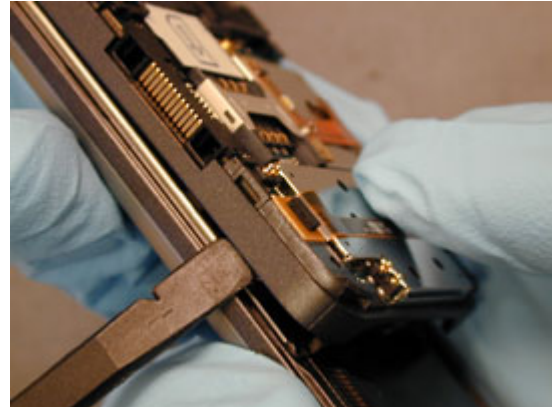
Pry the hinge up to release the latch.



Repeat for the left latch.



Pry the upper left back frame latch free so that you can see the upper left portion of the hinge.



Insert the pry tool between the hinge and the back frame so that the flat end of the tool is under the edge of the hinge flex near one end of the flex connection.

Rotate the pry tool towards the back frame when prying the hinge flex loose to avoid prying on components that are located directly adjacent to the hinge connection.



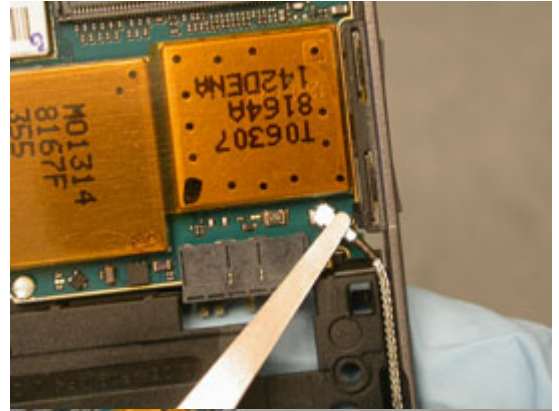
Once the hinge flex is free, rotate the front half of the phone from the back frame to separate the back frame from the hinge.

NOTE: THE MICROPHONE GASKET MAY NEED TO BE REMOVED FROM THE BACK FRAME.



2.2.6 Circuit Board Removal

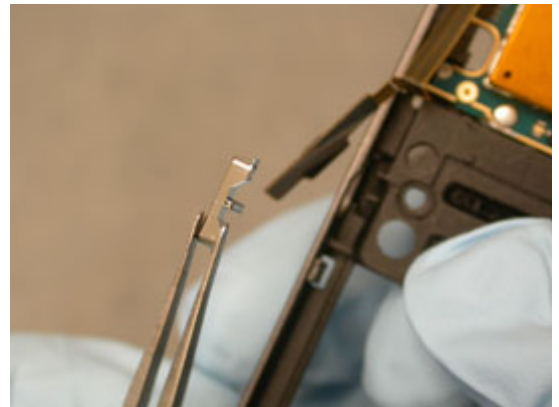
Disconnect the coax cable using round tipped tweezers and position it out of the way as shown.



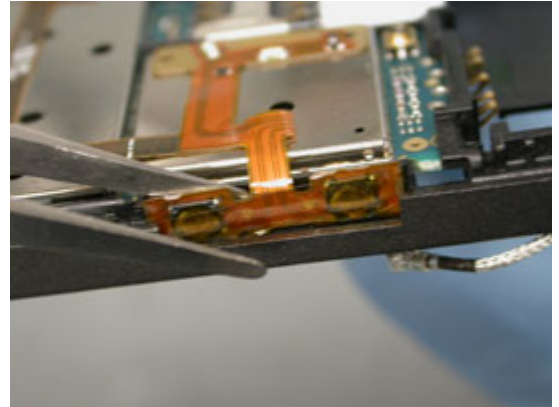
Lift the walkman key flex out of its position using round tipped tweezers.



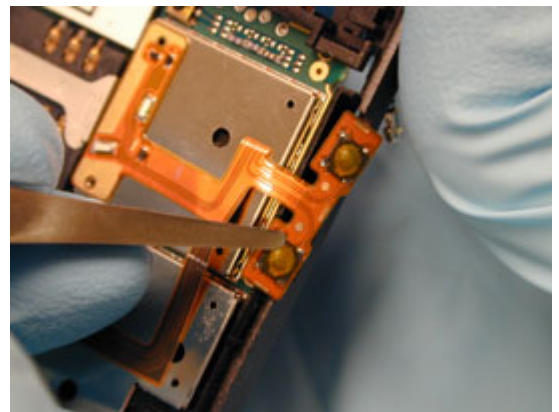
Remove the walkman key using round tipped tweezers.



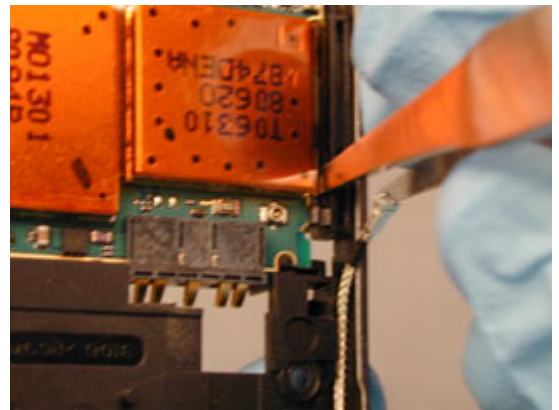
Insert one tip of the round tipped tweezers between the side key flex and the frame to unadhere the flex.



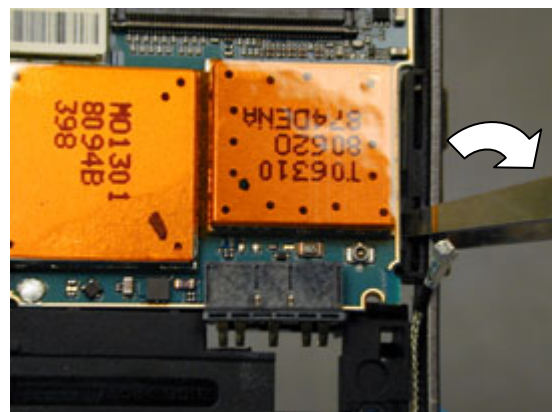
Lift the side key flex out using round tipped tweezers.



Insert one tip of round tipped tweezers between the back frame just above the lower right latch and the circuit board as shown.

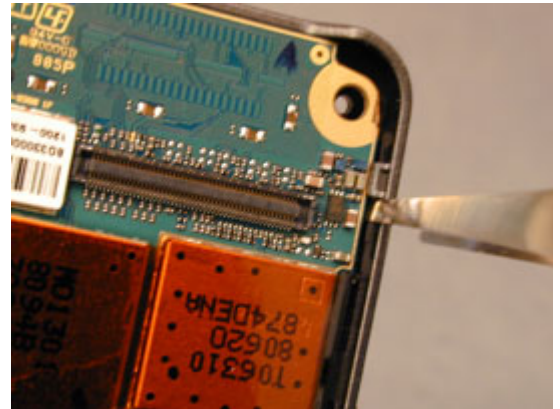


Rotate the tweezers away from the board to release the lower right latch.

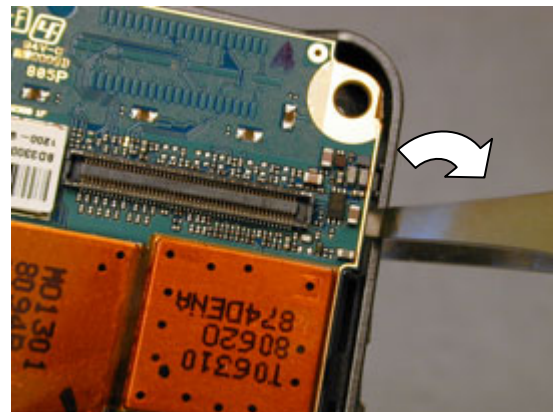




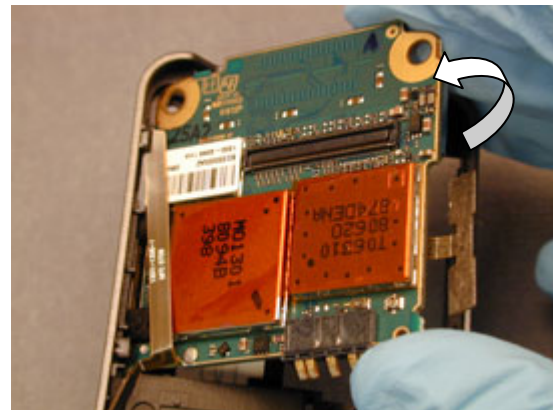
Insert one tip of round tipped tweezers between the frame and circuit board just below the upper right latch.



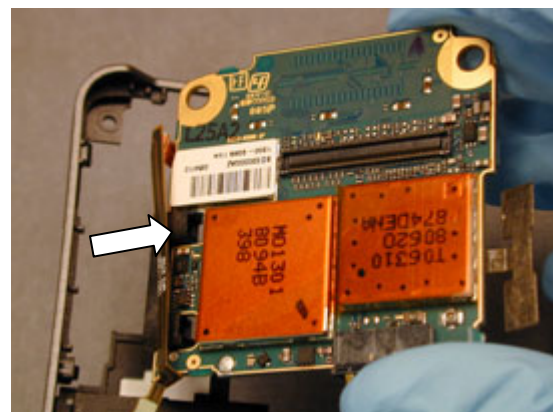
Rotate the tweezers away from the board to release the latch.



Rotate the right side of the board up.



Work the left side of the circuit board free from the rear frame and remove the circuit board.



2.3 Front Half

2.3.1 Front Cover Removal

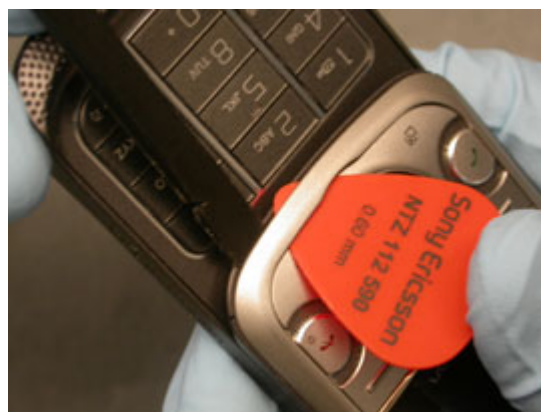
Open the phone.



Slide the plectrum between the navigation keypad and the front cover frame in the location shown to create a gap. Use the pry tool to pry the lower left latch.



Repeat for the location shown.



Mechanical

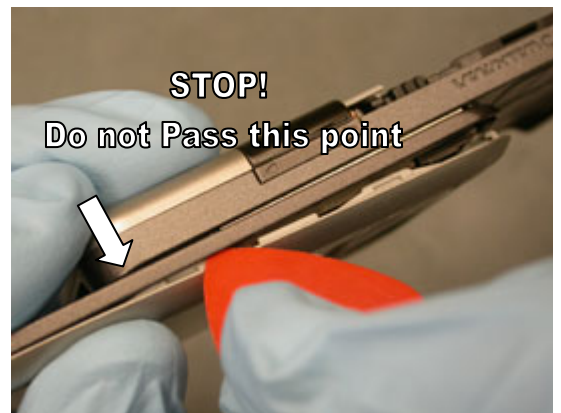
Slide the plectrum along the seam of one edge until you reach the top of the back half.

NOTE: IT IS IMPORTANT NOT TO SLIDE THE PLECTRUM ANY FURTHER THAN INDICATED TO REDUCE RISK OF DAMAGE TO FRONT COVER LATCHES.

Repeat for the other side.

NOTE: IT IS IMPORTANT NOT TO SLIDE THE PLECTRUM ANY FURTHER THAN INDICATED TO REDUCE RISK OF DAMAGE TO FRONT COVER LATCHES.

Lift up on the bottom edge of the cover and remove the navigation keypad.



NOTE: IT IS IMPORTANT TO FOLLOW THE INSTRUCTIONS EXACTLY TO REDUCE RISK OF DAMAGE TO THE FRONT COVER AND FRAME.

Lift up on the bottom edge of the cover and rotate it to the left until the upper left side latch releases.

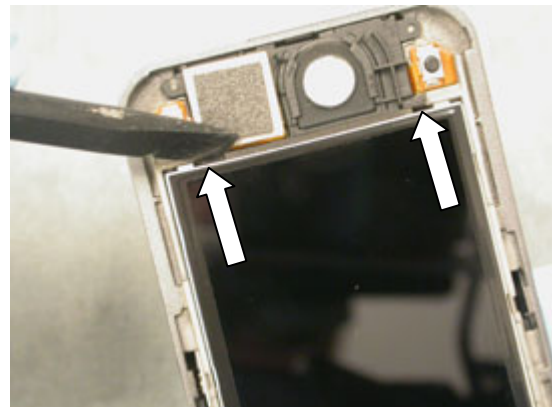
Then rotate the cover to the right to release the upper right side latch.

Once both of the upper side latches are released, rotate the front cover from the front frame by lifting front cover from the bottom.

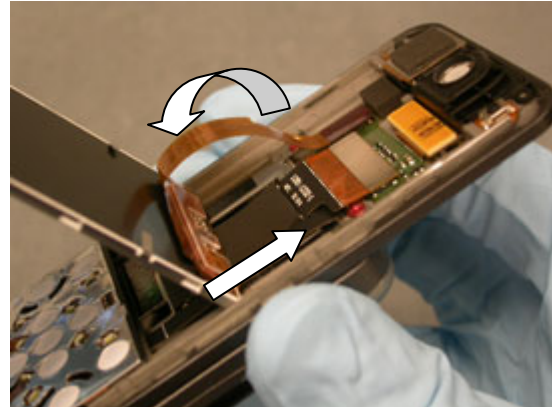


2.3.2 LCD Removal

Insert the flat end of the nylon pointer into the gap between the LCD cushion and LCD latch on whichever side has a larger gap and pry up.



Rotate the top of the LCD away from the upper frame while moving the bottom of the LCD towards the top of the phone.



Using a pry tool, disconnect the LCD from the NeoBon flex.

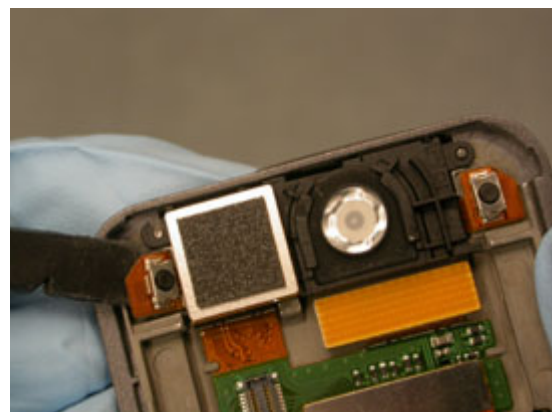


Lift the LCD from the phone.



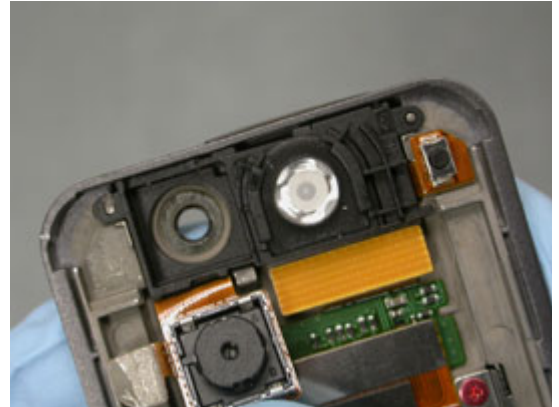
2.3.3 Ear Speaker Housing Removal

Pry the left game button flex up using a pry tool.



Pry the camera flex up using a pry tool and hold it back with your thumb.

NOTE: BE CAREFUL NOT TO CONTAMINATE THE ADHESIVE RING THAT HOLDS THE CAMERA IN PLACE.



Pry in the location shown with the tip of the nylon pointer to pop the ear speaker housing out.

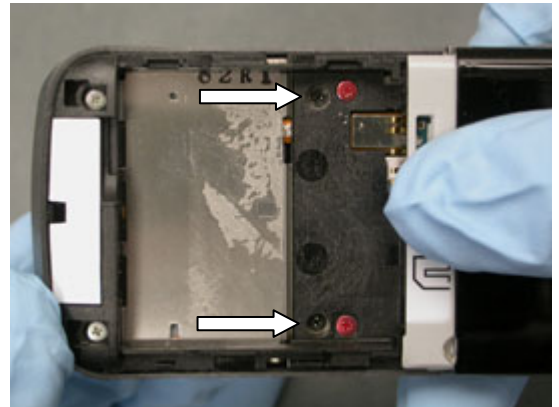
NOTE: MAKE SURE TO ONLY PRY ON THE HOUSING AND NOT THE M2 READER.

NOTE: AT THIS POINT YOU MAY WISH TO ADD A PROTECTIVE COVER TO THE ADHESIVE RING THAT HOLDS THE CAMERA.

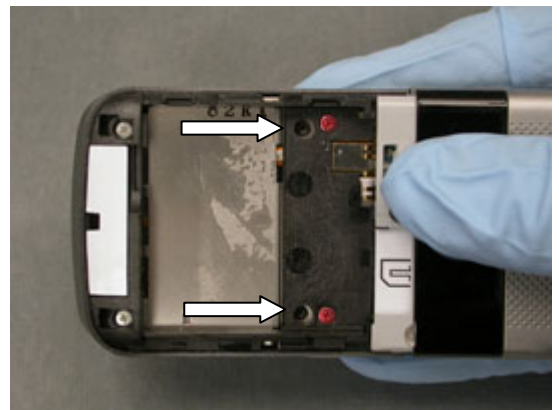


2.3.4 Front Screw Removal

Slide the hinge closed slightly to reveal two front screws and remove them using a JCIS-0 bit.



Slide the hinge more closed to reveal the remaining two screws and remove them using a JCIS-0 bit.

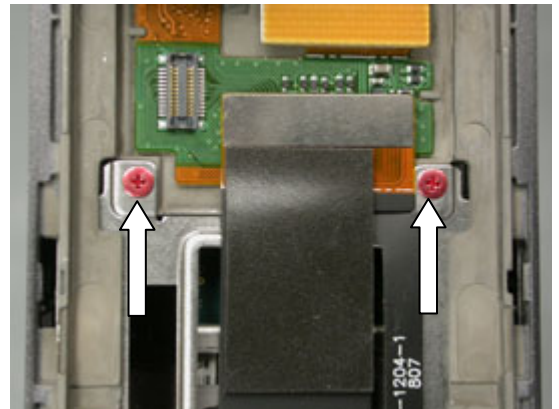


Return the phone to the open position.



2.3.5 Inner Screw Removal

Remove the two inner screws using a JCIS-0 bit.

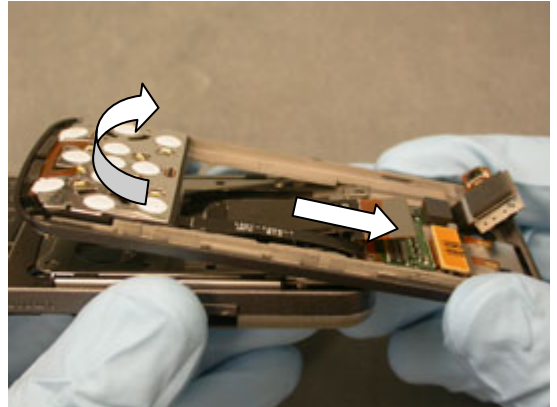


2.3.6 Front Frame Removal

Disconnect the Hinge flex from the NeoBon flex using a pry tool.



Rotate the bottom of the front frame away from the hinge, then slide the front frame away from the hinge.



3 Reassembly

Reassemble in the following order:

Front Half

- Front Frame (1) to Hinge (2)
- Inner Screw (3)
- Front Screw (4)
- Ear Speaker Housing (5)
- LCD (6)
- Front Cover (7)

Back Half

- Circuit Board (8)
- Back Frame (9)
- Keyboard (10)
- Middle Screw (11)
- Back Screw (12)
- Volume Key (13)
- Upper Back Cover (14)

Standard

- Label (15)
- Battery(16)
- Battery Cover (17)



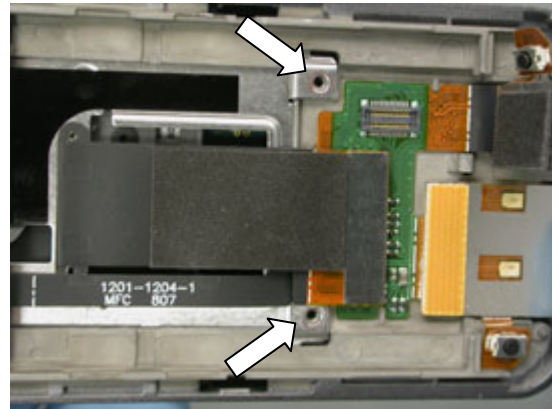
3.1 Front Half

3.1.1 Front Frame Installation

With the hinge in the open position, position the front frame and hinge as shown.



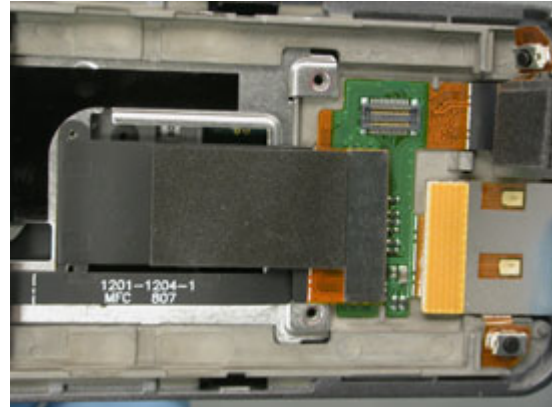
Feed the hinge flex connection through the opening in the front frame and slide the upper screw locations of the hinge over the screw bosses of the front frame.



Push the phone closed and push the frame tightly into place.



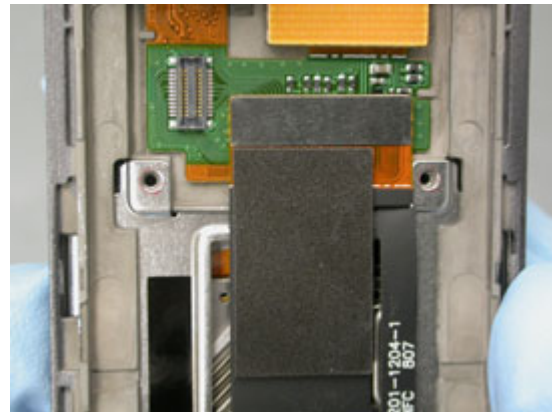
Connect the hinge flex to the NeoBon flex.



3.1.2 Inner Screw Installation

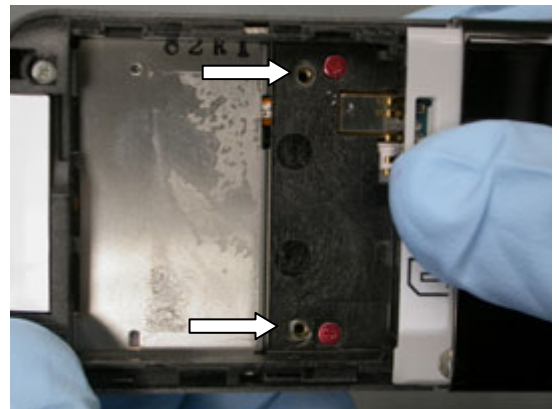
Insert two inner screws. Tighten to 10 Ncm using a JCIS-0 bit.

NOTE: DO NOT REUSE SCREWS.



3.1.3 Front Screw Installation

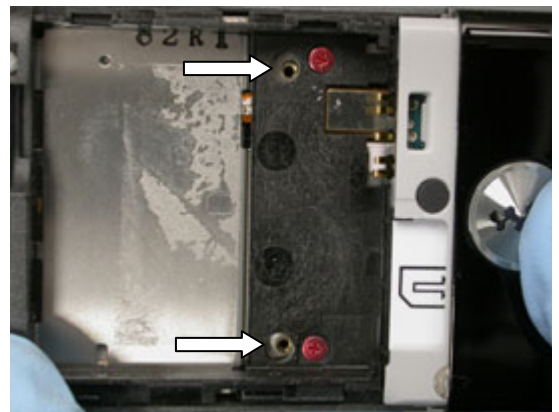
Open the phone slightly to expose two front screw holes.



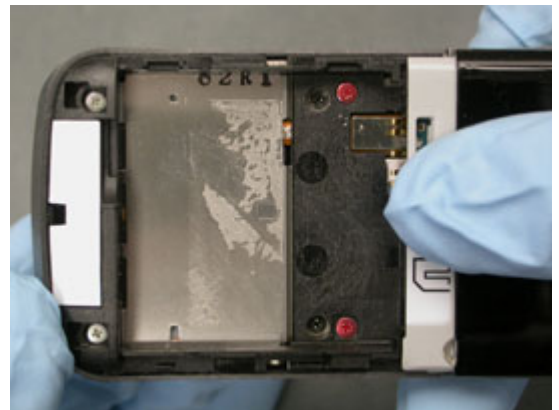
Install two front screws. Tighten to 10 Ncm using a JCIS-0 bit.



Open the phone more to expose the two remaining screw holes.



Install two front screws. Tighten to 10 Ncm using a JCIS-0 bit.



3.1.4 Ear Speaker Housing Installation

Hold the camera flex back with your thumb.

NOTE: IF THERE IS A PROTECTIVE COVER OVER THE CAMERA GASKET, REMOVE IT AND PROCEED TO THE HOUSING INSERTION. OTHERWISE, REMOVE THE CAMERA GASKET AS INSTRUCTED BELOW.



Mechanical

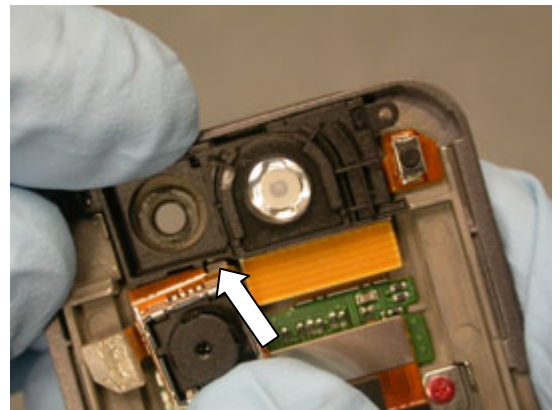
Use the flat end of a nylon pointer to completely remove the Camera Gasket.



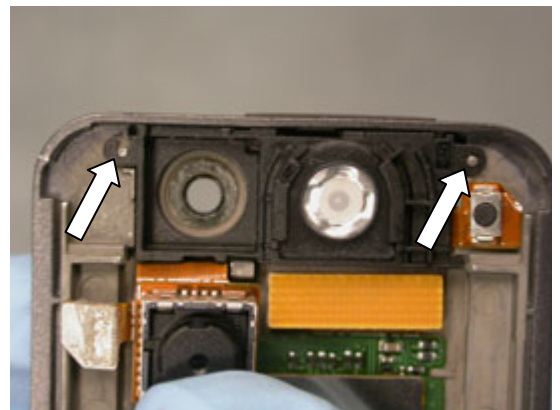
Position the new Camera Gasket as shown.



Insert the bottom edge of the ear speaker housing under the frame tab as shown.



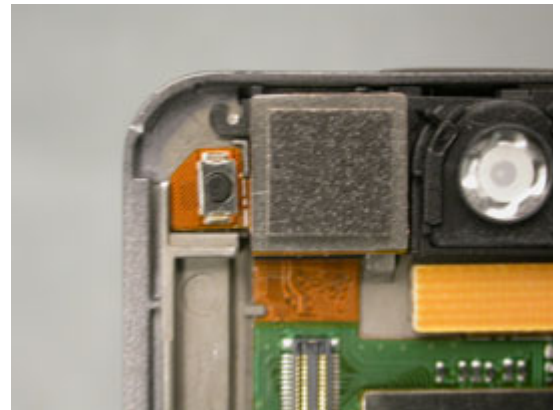
Push down on the top of the housing and on each end to lock the features in place.



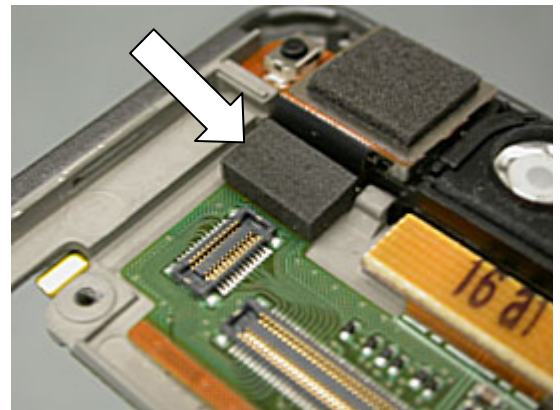
Rotate the camera flex down into the cavity and apply pressure to the back of it so that a good adhesive bond forms.



Position the left game key flex onto the frame and press on it so that a good adhesive bond forms.

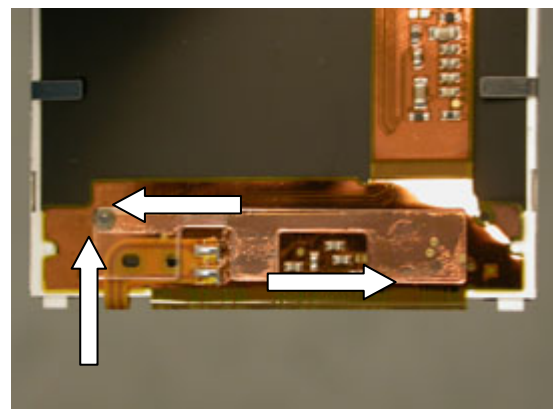


If there is not one present, place a Poron Pad below the camera and press on it so that a good adhesive bond forms.



3.1.5 LCD Installation

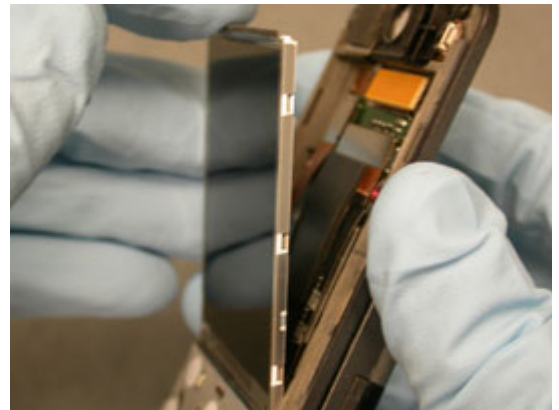
Ensure the LCD shim is installed. If there is no LCD shim, install one using the features as shown. Line the corner up with the edges of the hole in the flex. Line the bottom of the shim up with the edge of the flex.



While holding the LCD as shown, plug the LCD flex connector into the NeoBon flex connector.

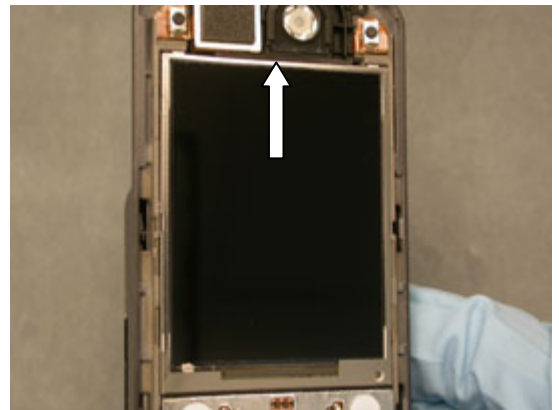


Insert the bottom edge of the LCD into the frame.



Rotate the top of the LCD into place and push the tabs in.

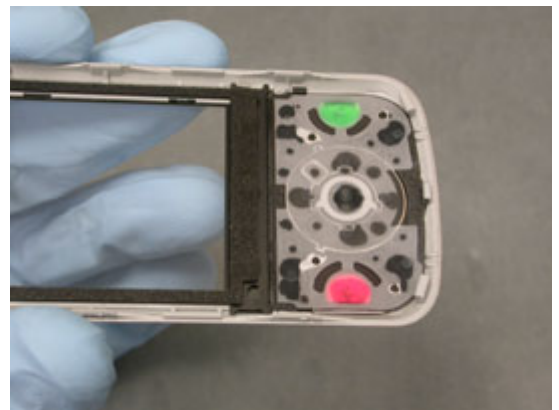
NOTE: YOU MAY NEED TO PUSH THE LCD CUSHION INTO PLACE USING A PRY TOOL.



3.1.6 Front Cover Installation

Place the navigation keypad onto the front cover.

NOTE: ENSURE THE GAME KEYS ARE IN PLACE.



Insert the upper tabs of the front cover into the frame slots.



NOTE: DO NOT PRESS DIRECTLY OVER THE UPPER SIDE LATCHES DUE TO THE HIGH RISK OF BREAKING/DAMAGING THE LATCHES.

Press on the display window in the location shown to engage the left upper side latch.



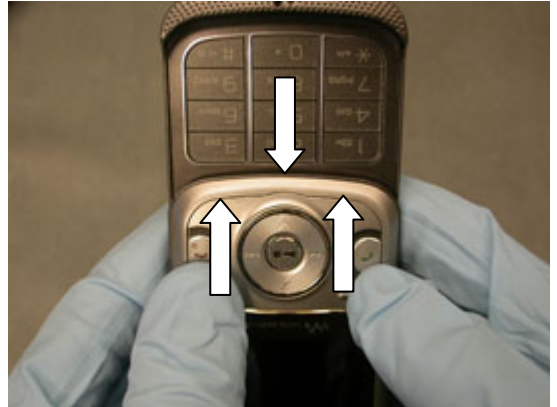
Press on the display window in the location shown to engage the right upper side latch.



Press on the sides of the front cover to engage middle latches.



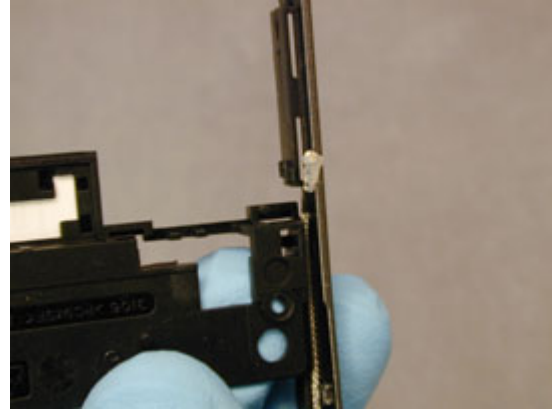
Press around the lower rim of the front cover to snap the latches in place.



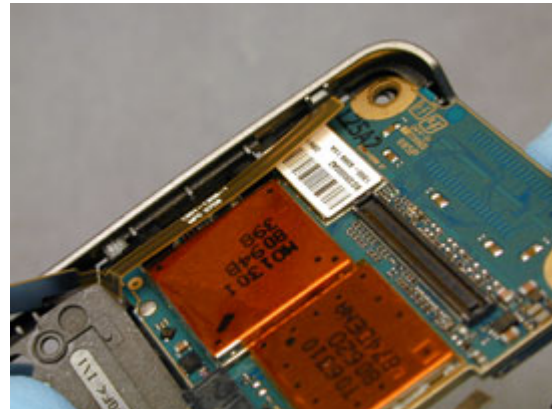
3.2 Back Half

3.2.1 Circuit Board Installation

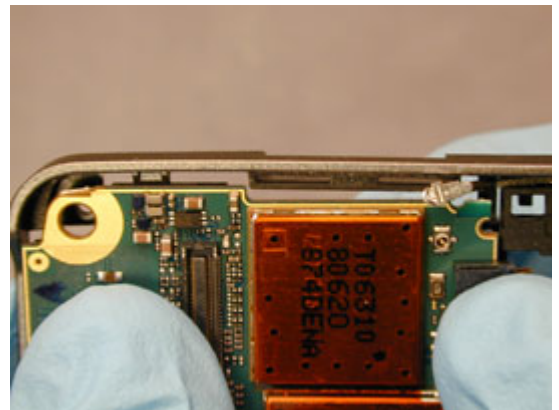
Ensure the coax cable is positioned out of the way as shown.



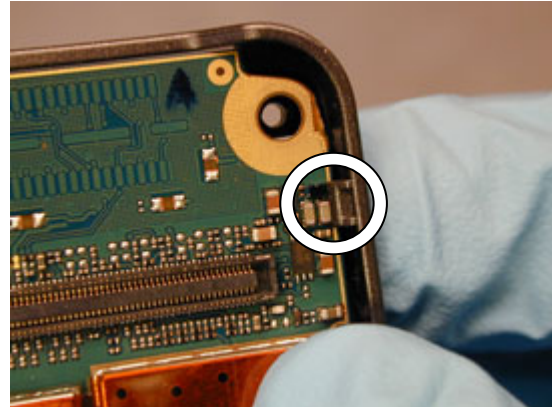
Insert the left half of the board as shown. The system connector should be inserted into its slot in the rear frame.



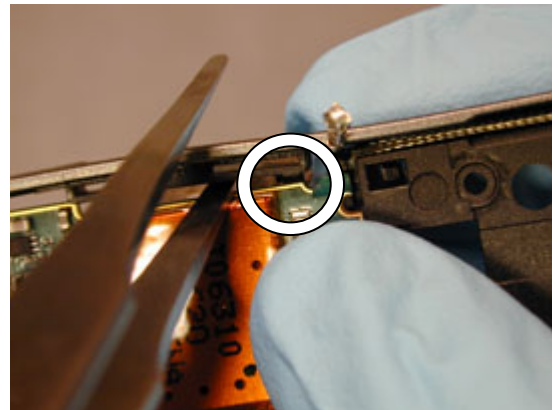
While holding the side key flex back, lower the right side of the board onto the frame.



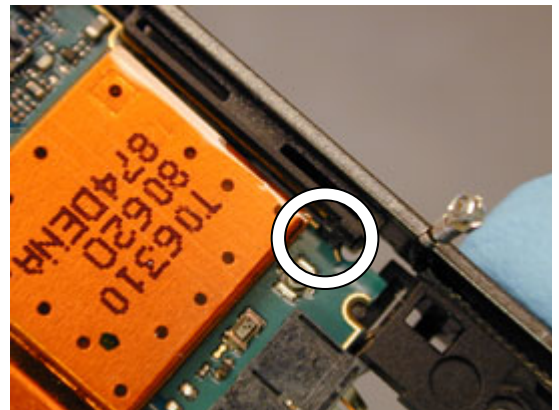
Push the board under the upper right tab.



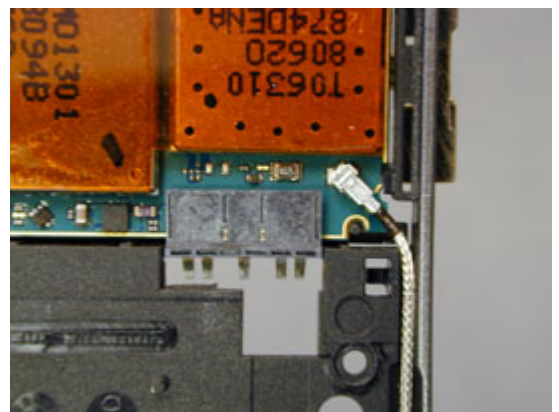
Insert one tip of round tipped tweezers between the circuit board and the frame just above the lower right latch as shown.



Pry the frame out and push the board under the latch.



Connect the coax cable and press the cable down into its slot in the rear frame.



Insert the walkman key using round tipped tweezers.

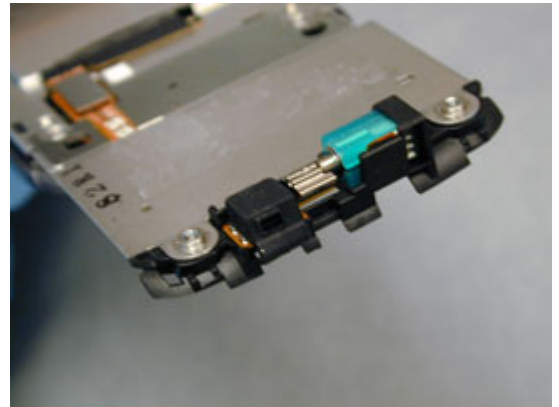


Holding the rear frame so that the walkman key is down, position the walkman key flex as shown using round tipped tweezers.

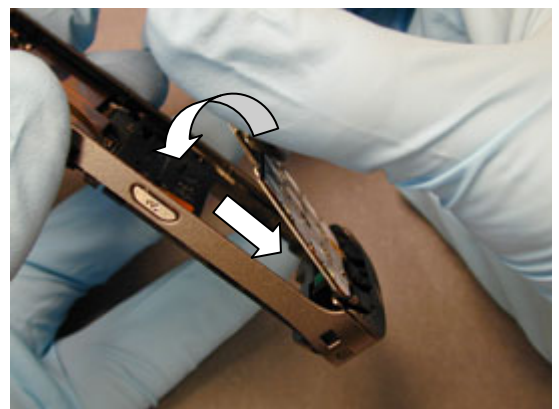


3.2.2 Back Frame Installation

With the frame in the open position, ensure the microphone gasket is in place on the microphone.



Insert the bottom of the hinge into the back frame and rotate the hinge down onto the rear frame



Snap the bottom right latch into place.



Snap the bottom left latch into place.

NOTE: YOU MAY HAVE TO PULL THE FRAME OUT TO ENGAGE THE LATCH. PUSH THE FRAME BACK TOWARDS THE HINGE TO ENSURE THE LATCH IS SECURE.



Using a nylon pointer, position the hinge flex over its connector.



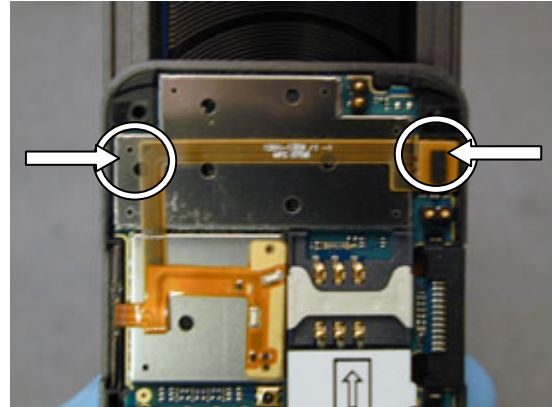
While holding the nylon pointer between the hinge flex and the connector end, squeeze the two phone halves together to start the engagement of the connection.

Work the nylon pointer along the top of the connection while squeezing the two phone halves together to completely engage the connection.



Push in the locations shown with the rings to snap the upper latches in place.

NOTE: YOU MAY NEED TO SQUEEZE THE SIDES OF THE FRAME IN AS SHOWN WITH THE ARROWS TO ENGAGE THE LATCHES.



3.2.3 Keyboard Installation

Push the keyboard up into the gap between the phone halves.

NOTE: ENSURE ANY ADHESIVE RESIDUE IS CLEANED OFF THE HINGE BEFORE INSTALLING A NEW KEYBOARD.



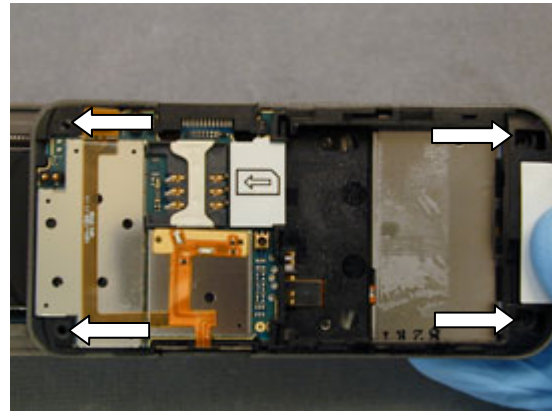
Lay the keyboard down on the keypad FPC and press on the edges shown so that a good adhesive bond forms.

NOTE: ENSURE THE KEYBOARD EDGE FITS UNDER THE CHIN COVER LIP.

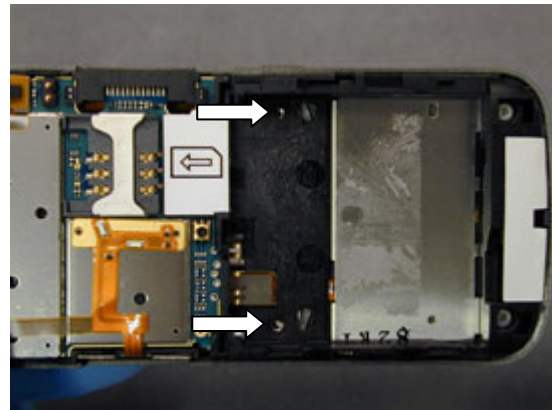


3.2.4 Back Screw Installation

Install four back screws in the locations shown. Tighten to 10 Ncm using a JCIS-0 bit.



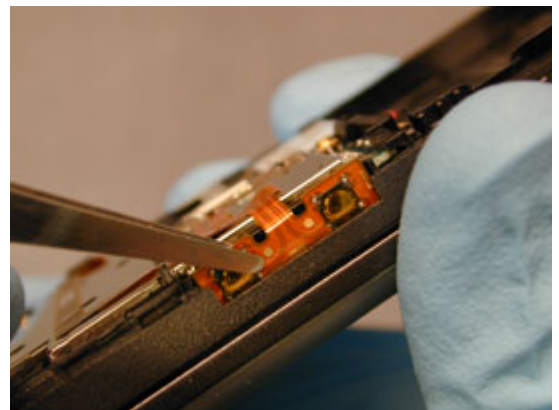
Install two middle screws in the locations shown. Tighten to 10 Ncm using a JCIS-0 bit.



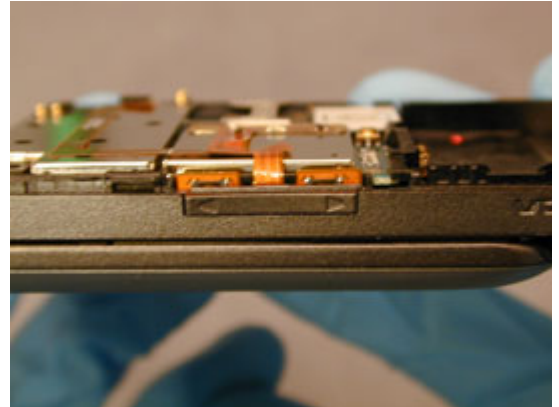
3.2.5 Volume Key Installation

Position the side key flex as shown using round tipped tweezers.

Apply pressure using a pry tool so that it bonds to the frame



Insert the side key in place.



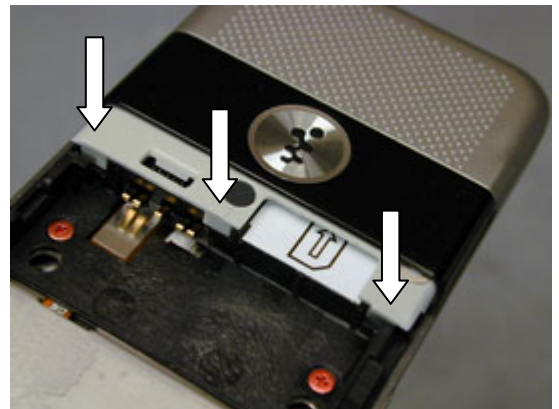
3.2.6 Upper Back Cover Installation

Insert the upper tabs of the upper back cover over their corresponding features on the back frame.



Rotate the lower end of the cover down onto the frame and press in the locations shown to snap the latches.

NOTE: ENSURE THE RF PLUG IS IN PLACE. IF NOT, INSTALL AS INSTRUCTED IN 4.24 RF PLUG REPLACEMENT.



3.3 Standard Installation

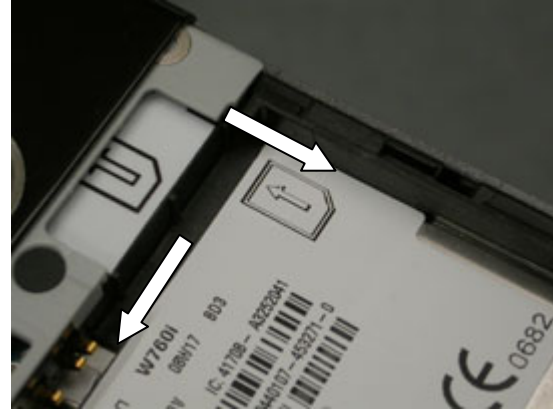
3.3.1 Label Installation

Print a new label.

NOTE: IF YOU ARE PRINTING A BRAZIL OR VIVO LABEL, REFER TO SECTION 5 FOR MORE INFORMATION ON THE COUNTRY OF ORIGIN.

Position the right edge of the label against the edge of the battery cavity. Line the top of the label up with the edge of the liquid intrusion indicator hole.

NOTE: DO NOT GET ANY LABEL ADHESIVE ON THE BATTERY CONTACTS.



Smooth the label out onto the battery cavity surface.



3.3.2 Battery Installation

Insert the contact end of the battery into the cavity as shown.



Press the battery down into place.

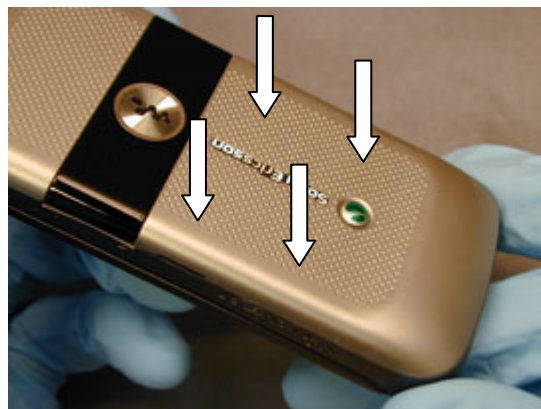


3.3.3 Battery Cover Installation

Insert the bottom latches of the battery cover into place on the frame.



Rotate the upper half of the cover down onto the phone and push in the locations shown to engage the latches.





4 Replacement

4.1 Antenna Assembly Replacement

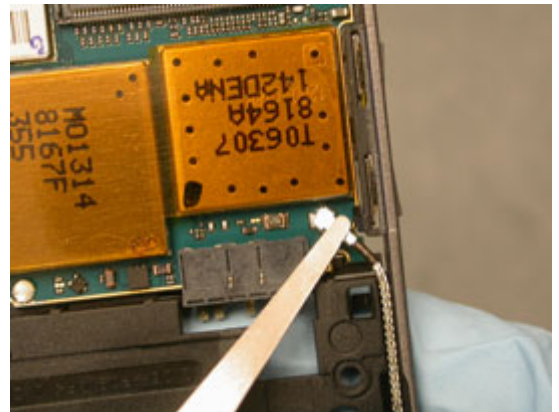
Complete 2.1.1-2.1.3 of the disassembly procedure.

Complete 2.2.1-2.2.5 of the disassembly procedure.

Complete the removal portion of 4.9 Coax Ground.

Removal

Disconnect the coax cable using round tipped tweezers as shown.



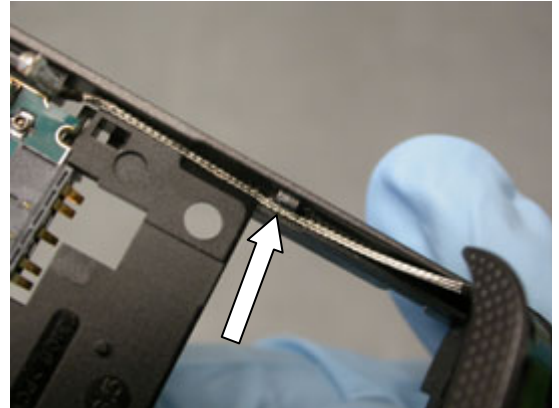
Insert a pry tool between the antenna and the back frame in the location shown and push in.



Lift the Antenna assembly out of the frame.



Ensure the coax cable does not get caught on the frame tab when removing the antenna assembly.

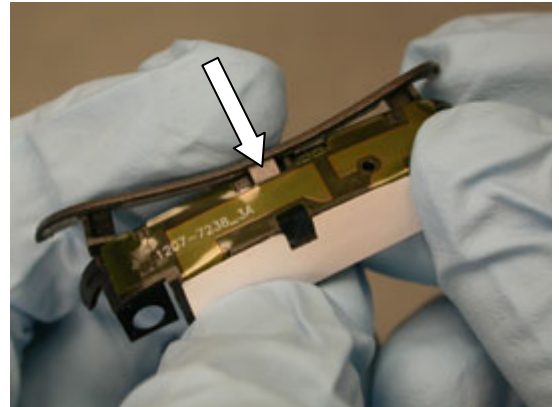


Installation

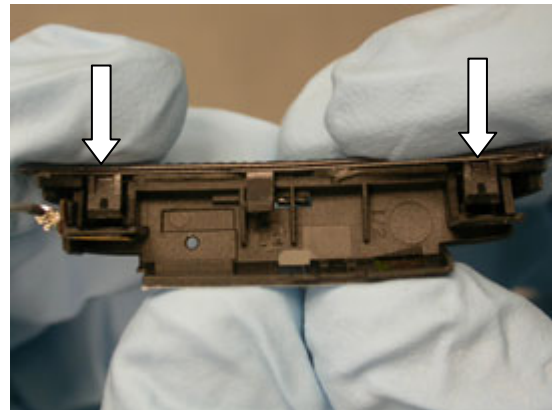
Obtain a new Antenna Assembly.

Obtain a new Chin Cover.

Snap the middle tab of the chin cover into place on the antenna assembly.



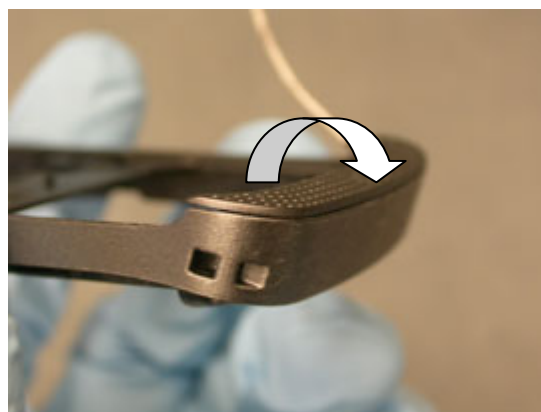
Snap the side tabs into place on the antenna assembly.



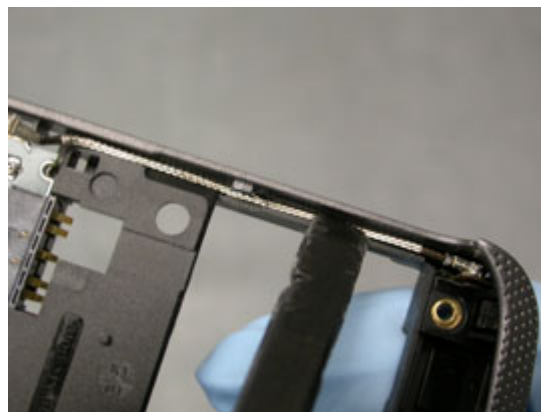
Line the two screw-hole tabs of the antenna assembly up with the frame as shown.



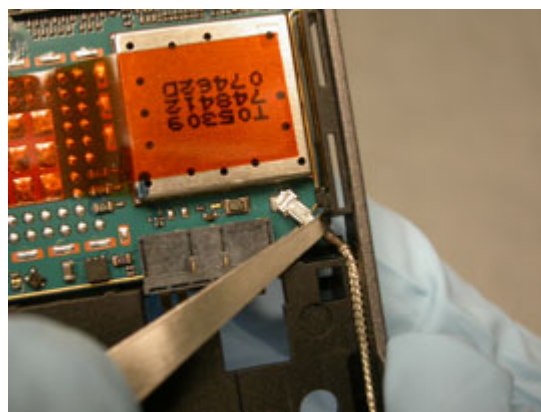
Rotate the antenna assembly down into place.



Push the coax cable into its groove using a nylon pointer.



Connect the coax cable to the circuit board.



Complete the installation portion of 4.9 Coax Ground.

Complete 3.2.2-3.2.6 of the reassembly procedure.

Complete 3.3.1-3.3.3 of the reassembly procedure.

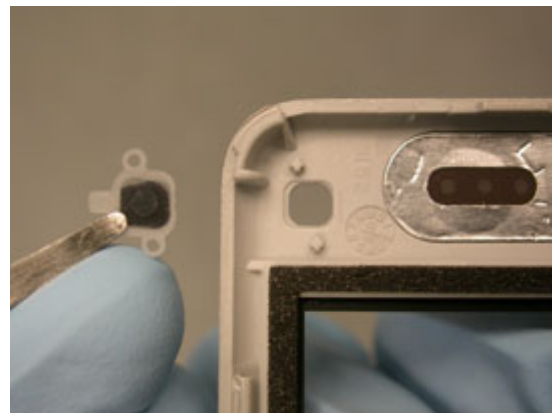
4.2 A/B Button Replacement

Complete 2.1.1-2.1.2 of the disassembly procedure.

Complete 2.3.1 of the disassembly procedure.

Removal

Remove the game key using round tipped tweezers.



Installation

Obtain a new Game Key.

Align the game key holes with the pegs on the front cover and press the game key into place.



Complete 3.1.6 of the reassembly procedure.

Complete 3.3.2-3.3.3 of the reassembly procedure.



4.3 Back Frame Replacement

Complete 2.1.1-2.1.3 of the disassembly procedure.

Complete 2.2.1-2.2.6 of the disassembly procedure.

Complete the removal portion of 4.1 Antenna Assembly Replacement.

Obtain a new Back Frame.

Complete the installation portion of 4.26 SIM Label Replacement.

Complete the installation portion of 4.1 Antenna Assembly.

Complete 3.2.1-3.2.6 of the disassembly procedure.

Complete 3.3.1-3.3.3 of the reassembly procedure.

4.4 Battery Replacement

Complete 2.1.1-2.1.2 of the disassembly procedure.

Obtain a new Battery.

Complete 3.3.2-3.3.3 of the reassembly procedure.

4.5 Battery Cover Replacement

Complete 2.1.1 of the disassembly procedure.

Obtain a new Battery Cover.

Complete 3.3.3 of the reassembly procedure.

4.6 Camera Replacement

If the camera needs to be replaced, replace both the camera and NeoBon flex as in 4.23 NeoBon Flex Replacement.

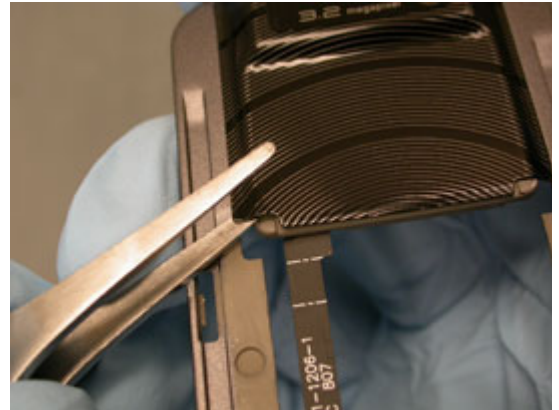
4.7 Camera Cover Replacement

Complete 2.1.1-2.1.2 of the disassembly procedure.

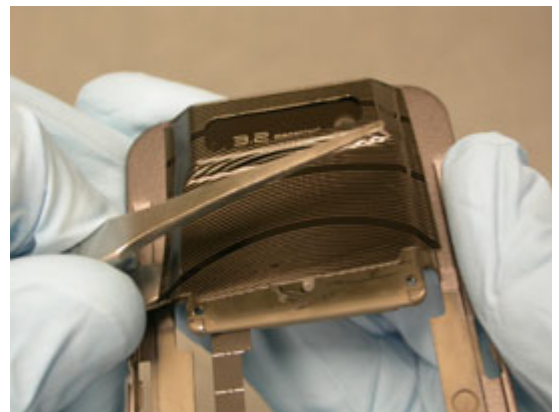
Complete 2.3.1-2.3.6 of the disassembly procedure.

Removal

Insert one tip of round tipped tweezers between the camera cover and the front frame as shown.



Work the tweezers under the camera cover and pry up the corner.



Grab the corner of the camera cover and remove it.



Installation

Obtain a new Camera Cover.

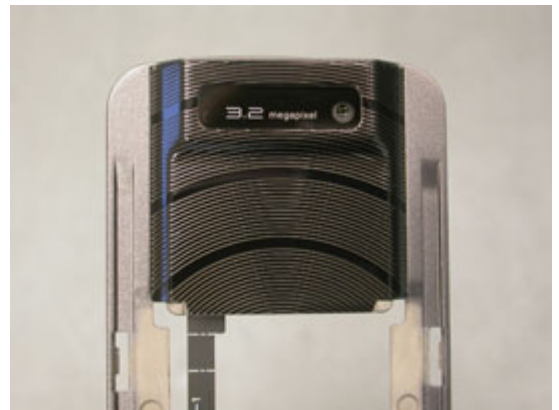
Line the top right corner of the camera cover up with the recess in the front frame as shown.



Rotate the camera cover down onto the front frame.



Press the entire surface of the cover firmly onto the frame for several seconds to form a good adhesive bond.



Complete 3.1.1-3.1.6 of the reassembly procedure.

Complete 3.3.2-3.3.3 or the reassembly procedure.

4.8 Chin Cover Replacement

See 4.1 Antenna Assembly Replacement.



4.9 Coax Ground Replacement

Complete 2.1.1-2.1.3 of the disassembly procedure.

Complete 2.2.1-2.2.5 of the disassembly procedure.

Removal

Remove the gasket using round tipped tweezers.



Installation

Obtain a new Coax Cable Gasket.

Lay the gasket in the groove. Line the end up with the feature shown.



Complete 3.2.2-3.2.6 of the reassembly procedure.

Complete 3.3.1-3.3.3 of the reassembly procedure.

4.10 Ear Speaker Replacement

Complete 2.1.1-2.1.2 of the disassembly procedure.

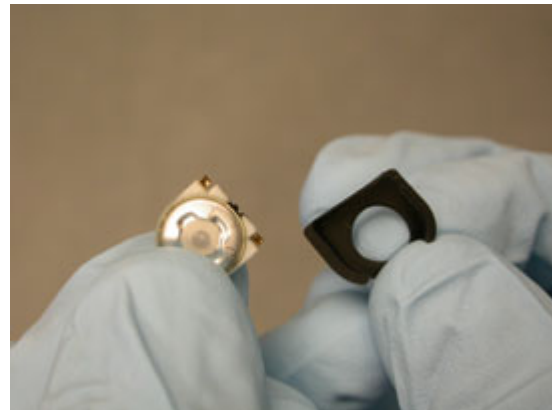
Complete 2.3.1-2.3.3 of the disassembly procedure.

Removal

Press on the non-contact side of the ear speaker to remove it from the housing.



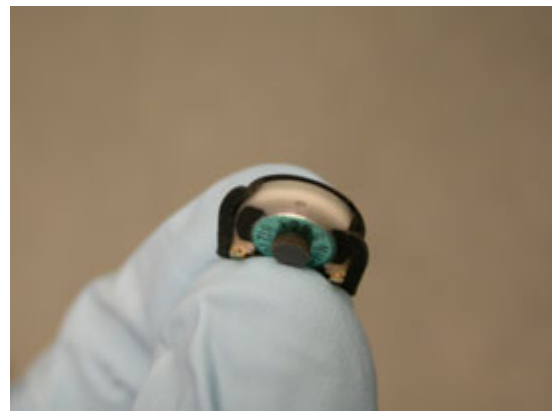
Separate the ear speaker and ear speaker gasket.



Installation

Obtain a new Ear Speaker and/or ear speaker gasket as necessary.

Place the ear speaker in the ear speaker gasket as shown.



Place the ear speaker/gasket assembly in the housing as shown.



Complete 3.1.4-3.1.6 of the reassembly procedure.

Complete 3.3.2-3.3.3 of the reassembly procedure.

4.11 Ear Speaker Gasket Replacement

Follow 4.10 Ear Speaker Replacement, but replace the ear speaker gasket instead of the speaker.

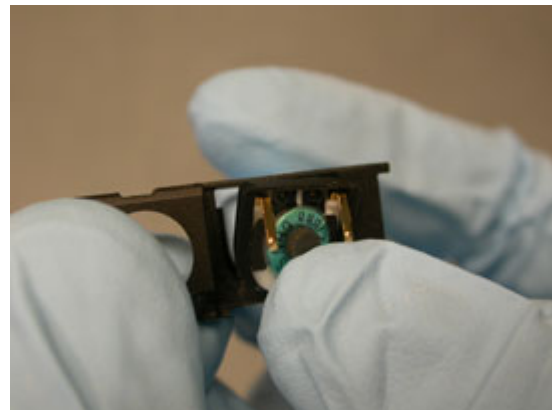
4.12 Ear Speaker Housing Replacement

Complete 2.1.1-2.1.2 of the disassembly procedure.

Complete 2.3.1-2.3.3 of the disassembly procedure.

Removal

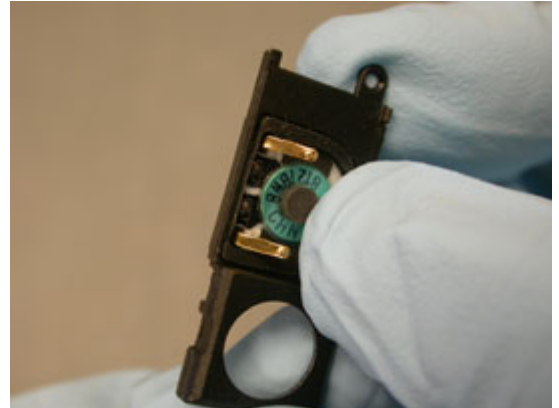
Press on the non-contact side of the ear speaker to remove it from the housing.



Obtain a new Ear Speaker Housing.

Installation

Place the ear speaker/gasket assembly in the housing as shown.



Complete 3.1.4-3.1.6 of the reassembly procedure.

Complete 3.3.2-3.3.3 of the reassembly procedure.

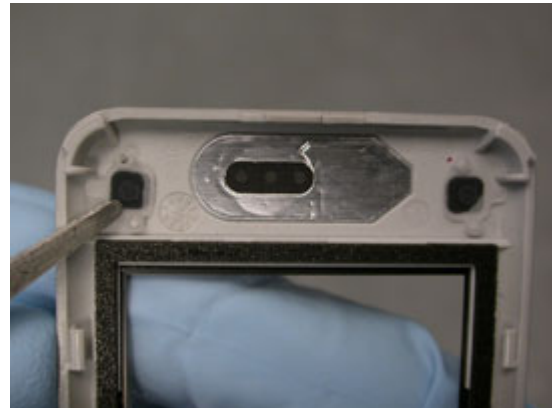
4.13 Front Cover Replacement

Complete 2.1.1-2.1.2 of the disassembly procedure.

Complete 2.3.1 of the disassembly procedure.

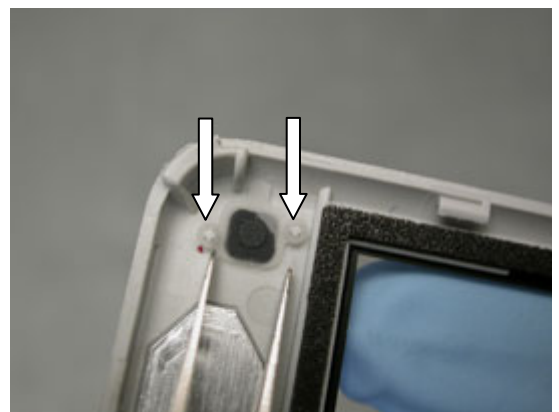
Removal

Remove the two game keys using round tipped tweezers.

**Installation**

Obtain a new Front Cover.

Install the two game keys in the new front cover by aligning the holes with the alignment pegs as shown.



Complete 3.1.6 of the reassembly procedure.

Complete 3.3.2-3.3.3 of the reassembly procedure.

4.14 Front Frame Replacement

Complete 2.1.1-2.1.3 of the disassembly procedure.

Complete 2.3.1-2.3.6 of the disassembly procedure.

Installation

Obtain a new Front Frame.

Obtain a new Camera Cover.

Obtain a new M2 Cover.

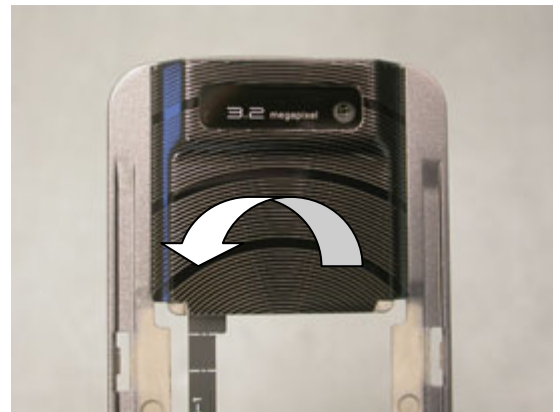
NOTE: REMOVE THE PROTECTIVE COVER FROM THE CAMERA LENSE COVER BEFORE INSTALLING THE CAMERA COVER.

Line the top right corner of the camera cover up with the recess in the front frame as shown.

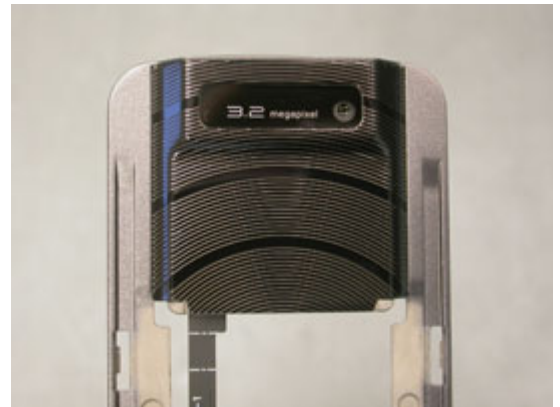
NOTE: AFTER INSTALLATION OF THE CAMERA COVER, PLACE THE PROTECTIVE COVER BACK OVER THE CAMERA LENSE AREA.



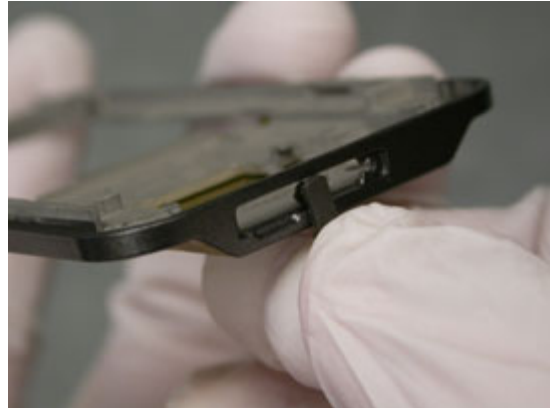
Rotate the camera cover down onto the front frame.



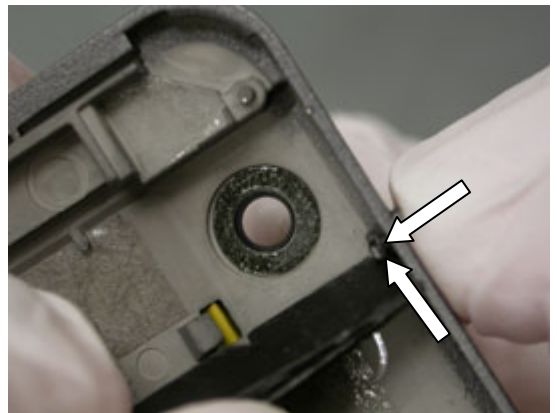
Press the entire surface of the cover firmly onto the frame for several seconds to form a good adhesive bond.



With the M2 cover oriented as shown, place the peg into the M2 slot.



While pushing down on the pegged end and pushing the peg with a pry tool, slide the M2 cover peg into place and close the cover.



Complete the installation portion of 4.23 NeoBon Flex Replacement.

Complete 3.1.1-3.1.6 of the reassembly procedure.

Complete 3.3.1-3.3.3 of the reassembly procedure.

4.15 Hinge Replacement

Complete 2.1.1-2.1.3 of the disassembly procedure.

Complete 2.2.1-2.2.5 of the disassembly procedure.

Complete 2.3.1-2.3.6 of the disassembly procedure.

Obtain a new Hinge.

Complete 3.1.1-3.1.6 of the reassembly procedure.

Complete 3.2.2-3.2.6 of the disassembly procedure.

Complete 3.3.1-3.3.3 of the reassembly procedure.



4.16 Keyboard Replacement

Complete 2.1.1-2.1.2 of the disassembly procedure.

Complete 2.2.4 of the disassembly procedure.

Obtain a new Keyboard.

Complete 3.2.3 of the reassembly procedure.

Complete 3.3.2-3.3.3 of the reassembly procedure.

4.17 Keypad FPC Replacement

Complete 2.1.1-2.1.3 of the disassembly procedure.

Complete 2.2.1-2.2.5 of the disassembly procedure.

Removal

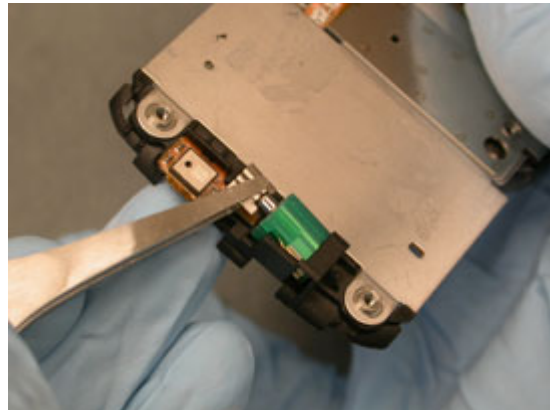
While holding the keypad FPC flex down, disconnect the hinge flex.



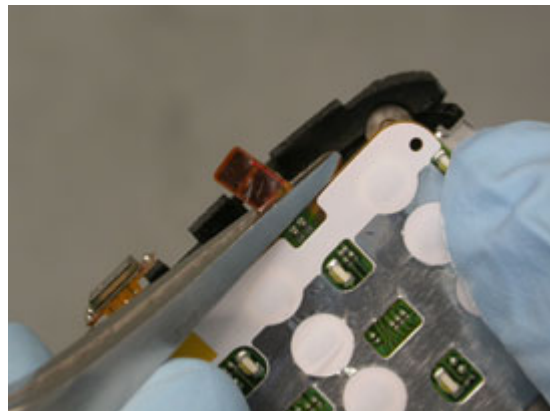
Pry the microphone portion of the keypad FPC up using one tip of round tipped tweezers.



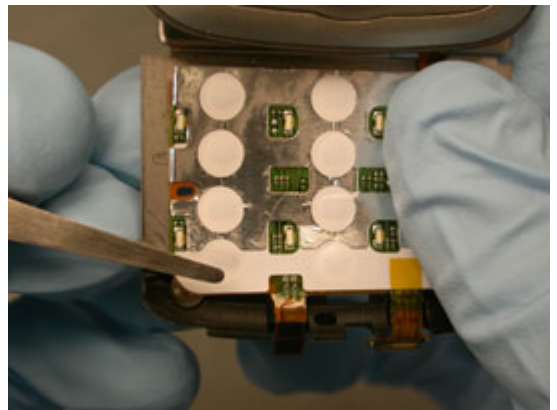
Remove the vibrator using a pair of round tipped tweezers.



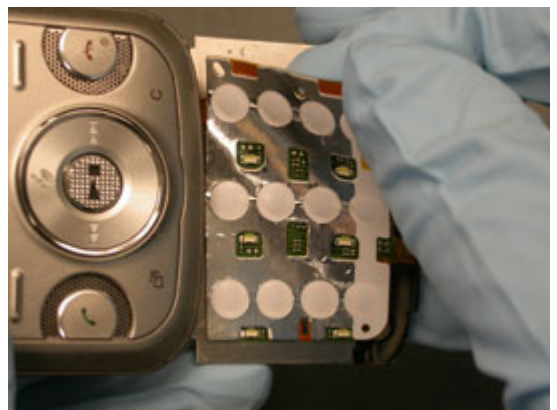
Pry the vibrator flex out carefully using round tipped tweezers.



Insert the tip of the round tipped tweezers under the keypad FPC just above the screw hole.



Peel up the Keypad FPC.



Pull the keypad straight off the hinge.



Clean off any remaining adhesive residue from the keypad or microphone.



Installation

Obtain a new Keypad FPC.

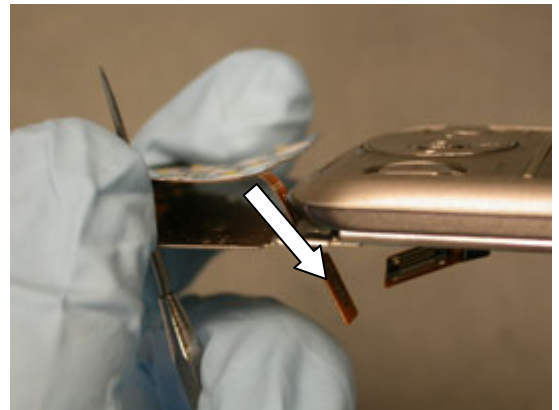
Insert the tip of a dental hook through the hole in the hinge shown.



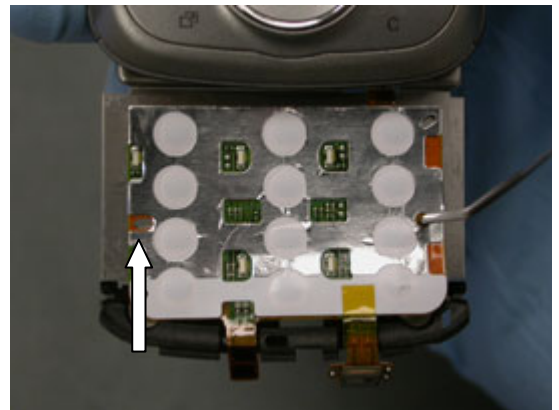
Align the keypad FPC hole up with the hook and press it through.



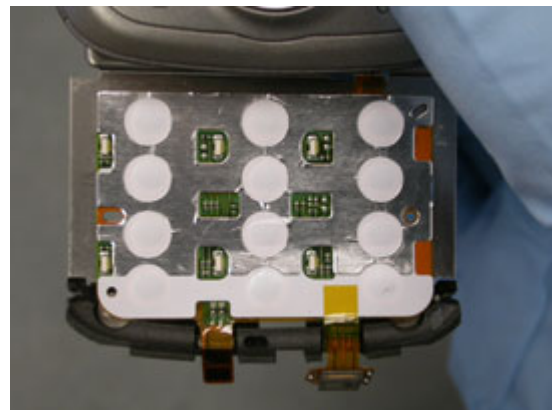
Pass the connection portion of the flex through the slot in the hinge.



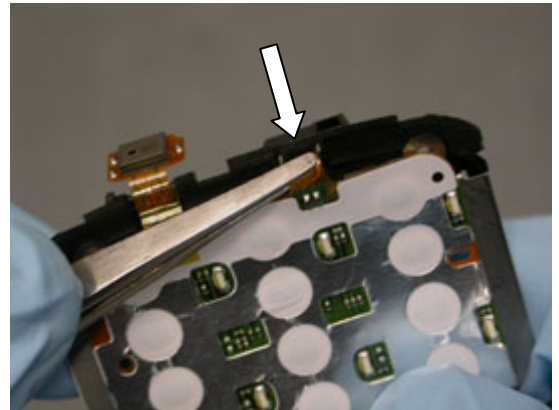
While keeping the keypad FPC slot aligned with the one on the hinge, place the keypad FPC against the hinge.



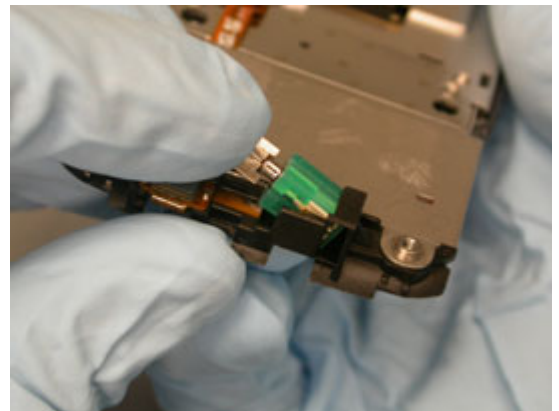
Press over the surface of the keypad so a good adhesive bond is formed.



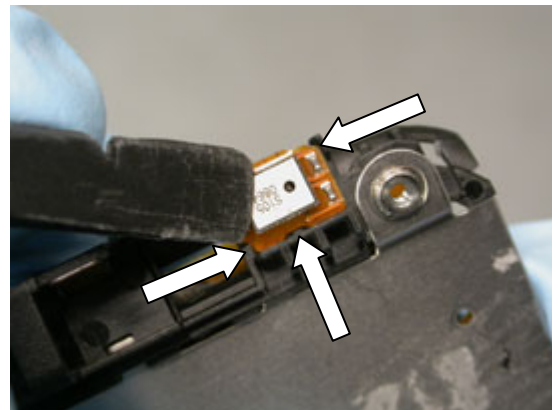
Push the vibrator portion of the flex through the slot in the plastic frame using round tipped tweezers.



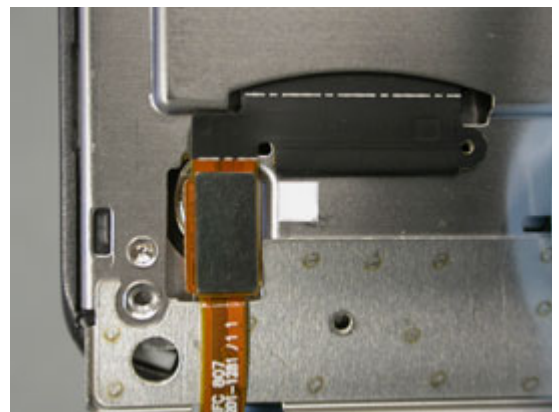
Place the vibrator in its socket and push it into place.



Place the microphone portion of the flex onto the plastic so that the corner features and center tab of the plastic line up with the flex and press to form a good bond.



Connect the hinge flex to the keypad FPC.



Complete 3.2.2-3.2.6 of the reassembly procedure.



Complete 3.3.1-3.3.3 of the reassembly procedure.

4.18 LCD Replacement

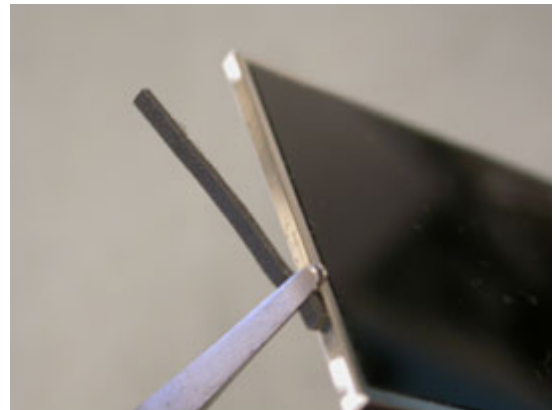
Complete 2.1.1-2.1.2 of the disassembly procedure.

Complete 2.3.1-2.3.2 of the disassembly procedure.

Obtain a new LCD.

Obtain a new Display cushion.

Center the display cushion on the top edge of the LCD.



Complete 3.1.5-3.1.6 of the reassembly procedure.

Complete 3.3.2-3.3.3 of the reassembly procedure.

4.19 Liquid Intrusion Indicator Replacement

Complete 2.1.1-2.1.3 of the disassembly procedure.

Complete 2.2.1-2.2.5 of the disassembly procedure.

Removal

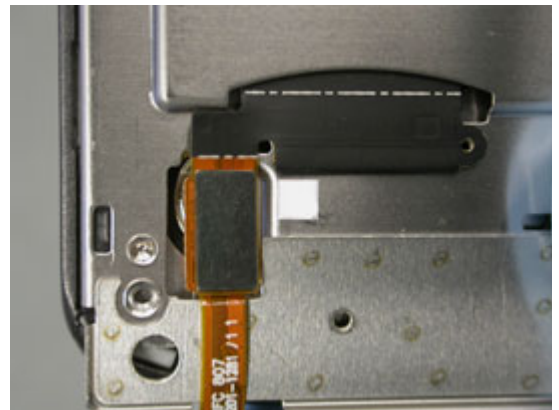
Remove the liquid intrusion indicator using round tipped tweezers.



Installation

Obtain a new Liquid Intrusion Indicator.

Place the indicator in the position shown.



Complete 3.2.2-3.2.6 of the reassembly procedure.

Complete 3.3.1-3.3.3 of the reassembly procedure.

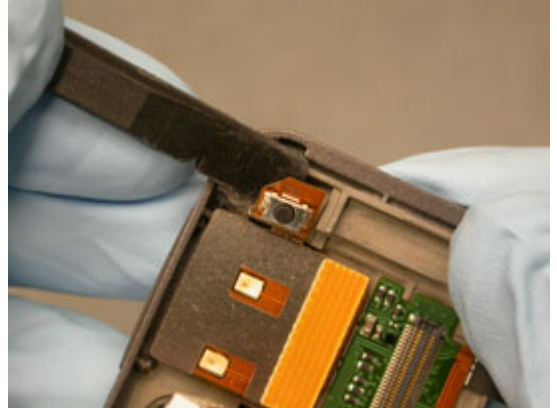
4.20 M2 Cover Replacement

Complete 2.1.1-2.1.2 of the disassembly procedure.

Complete 2.3.1-2.3.3 of the disassembly procedure.

Removal

Pry up the right game key portion of the NeoBon flex using a pry tool.



Insert one tip of round tipped tweezers between the M2 reader and the frame above the M2 tab and pry the M2 reader loose.

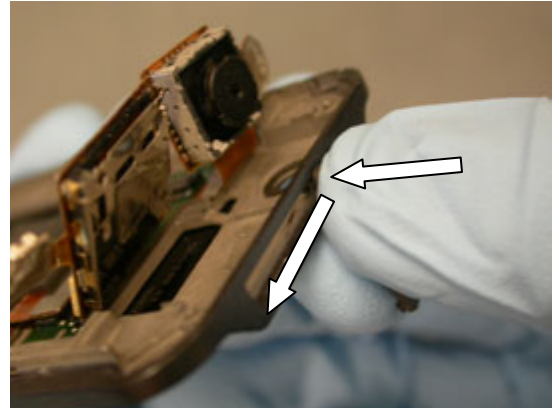


Open the M2 Cover and rotate it 90 degrees as shown.





While pushing down on the pegged end, pull the M2 cover towards the open M2 slot with .



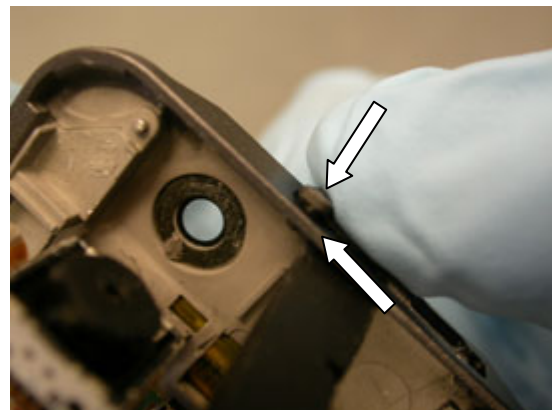
Installation

Obtain a new M2 Cover.

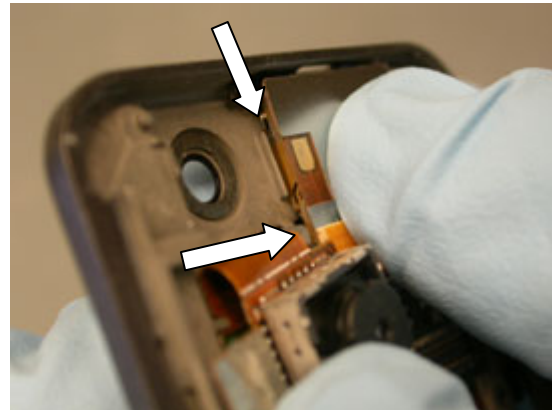
With the M2 cover oriented as shown, place the peg into the M2 slot.



While pushing down on the pegged end and pushing the peg with a pry tool, slide the M2 cover peg into place and close the cover.



Line the bottom of the M2 reader up with the raised frame features and press it in place so that a good adhesive bond forms.



Complete 3.1.4-3.1.6 of the reassembly procedure.

Complete 3.3.2-3.3.3 of the reassembly procedure.

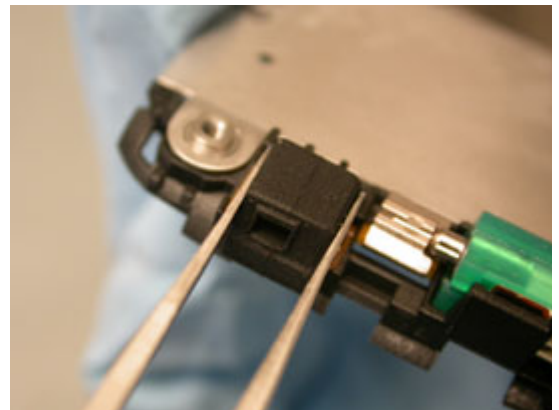
4.21 Microphone Gasket Replacement

Complete 2.1.1-2.1.3 of the disassembly procedure.

Complete 2.2.1-2.2.5 of the disassembly procedure.

Removal

Remove the microphone gasket.



Installation

Obtain a new microphone gasket.

Place the microphone gasket over the microphone and wrap the tail around the underside of the flex.



Complete 3.2.2-3.2.6 of the reassembly procedure.

Complete 3.3.1-3.3.3 of the reassembly procedure.

4.22 Navigation Keypad Replacement

Complete section 2.1.1-2.1.2 of the disassembly procedure.

Removal

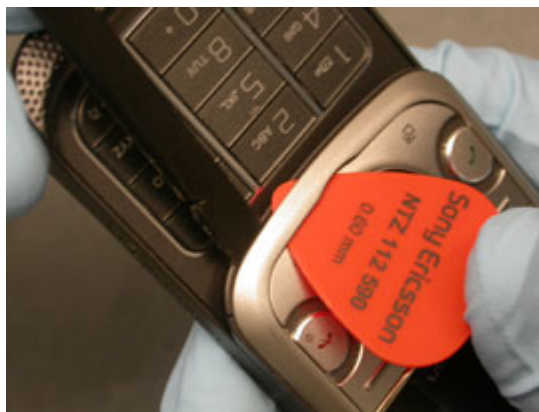
Open the phone.



Slide the plectrum between the navigation keypad and the front cover frame in the location shown to create a gap. Pry the bottom right latch up using a pry tool.



Repeat for the location shown.





Mechanical

Slide the plectrum along the seam of one edge up to the top of the back half.

NOTE: IT IS IMPORTANT NOT TO SLIDE THE PLECTRUM FURTHER THAN INDICATED TO REDUCE RISK OF DAMAGE TO THE FRONT COVER/FAME.



Repeat for the other side.



Lift up on the bottom edge of the cover and remove the navigation keypad.





NOTE: IT IS IMPORTANT TO FOLLOW THE INSTRUCTIONS EXACTLY TO REDUCE RISK OF DAMAGE TO THE FRONT COVER AND FRAME.

Lift up on the bottom edge of the cover and rotate it to the left until the upper left side latch releases.

Then rotate the cover to the right to release the upper right side latch.

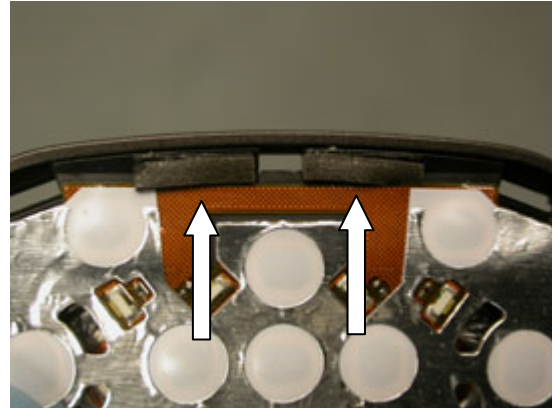
Once both of the upper side latches are released, rotate the front cover from the front frame by lifting front cover from the bottom.



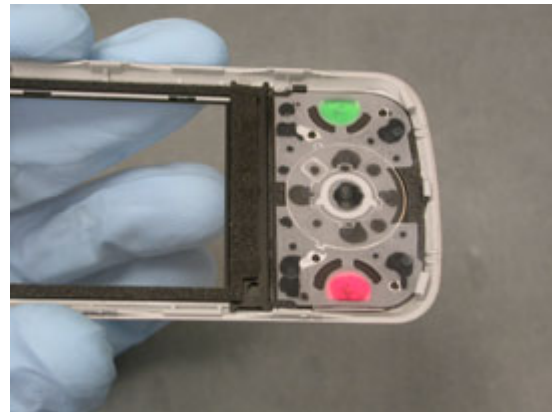
*Mechanical***Installation**

Obtain a new Navigation Keypad.

Ensure the poron pads are installed on the speaker box as shown. If they are not, install them as indicated in 4.24 Speaker Box Replacement.

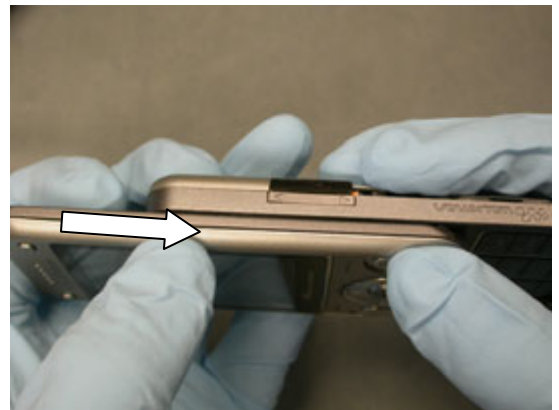


Place the navigation keypad onto the front cover.



Insert the upper tabs of the front cover into the frame slots.

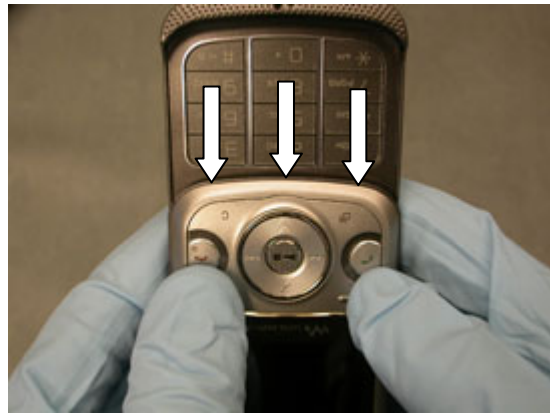
Press on the edge of the cover at the top going down the phone to engage the latches.



Repeat for the other side.



Press on the lower rim to snap the latches in place.



Complete section 3.3.2-3.3.3 of the reassembly procedure.

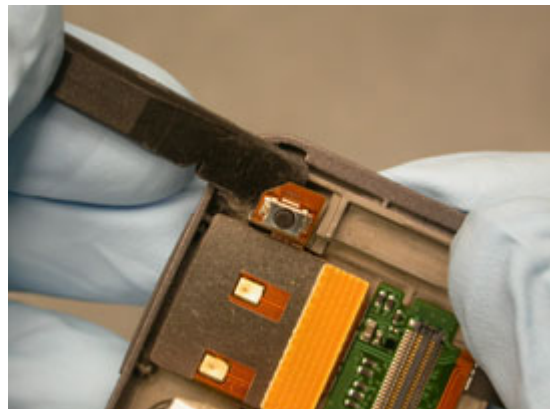
4.23 NeoBon Flex Replacement

Complete 2.1.1-2.1.3 of the disassembly procedure.

Complete 2.3.1-2.3.6 of the disassembly procedure.

Removal

Pry up the right game key flex using a pry tool.

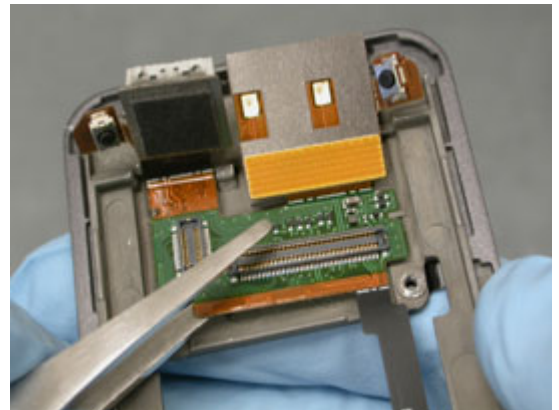


Mechanical

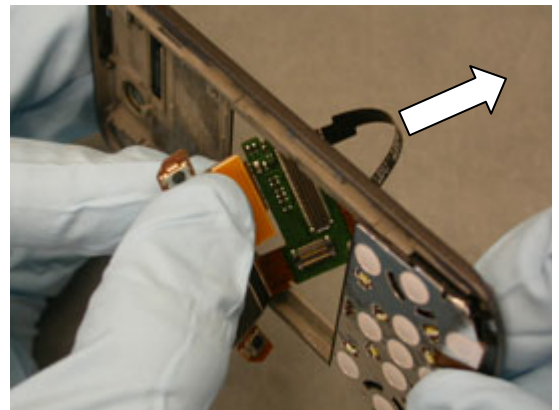
Insert one tip of round tipped tweezers between the M2 reader and the frame above the M2 tab and pry the M2 reader loose.



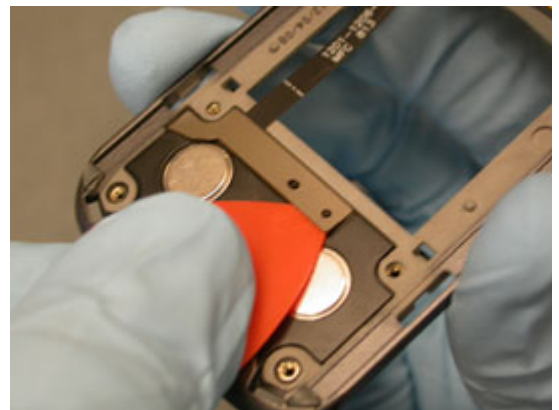
Pry the NeoBon PCB loose using one tip of the round tipped tweezers.



Pass the upper portion of the NeoBon flex through the frame to the other side.

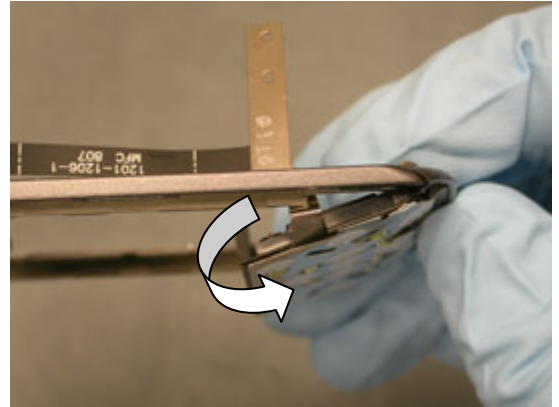


Pry up in the location shown to free the NeoBon flex from the speaker box.

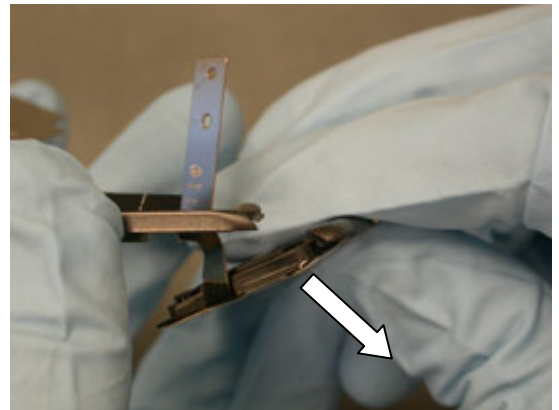




Rotate the top of the speaker box forward.

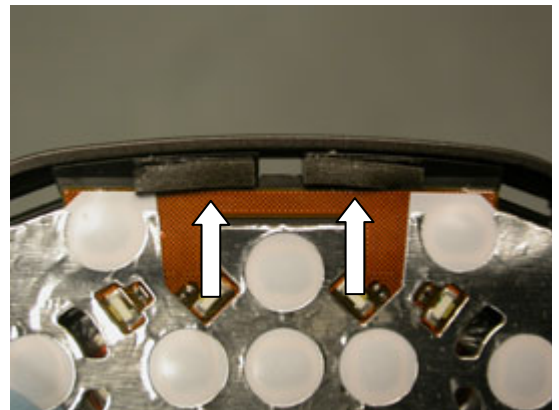


Pull the speaker box away at the angle shown.



Remove the Speaker Box Pads using round tipped tweezers.

NOTE: DO NOT REUSE PORON PADS.



Peel the NeoBon Flex off of the speaker box.

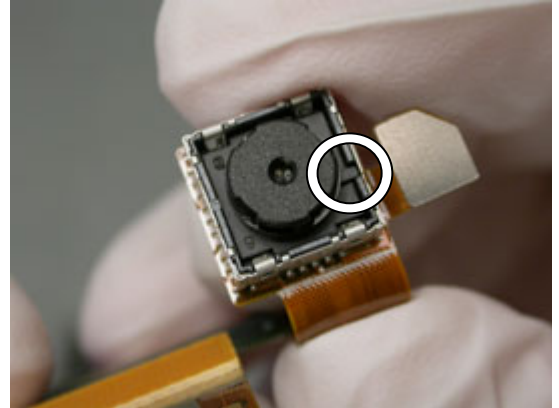


Installation

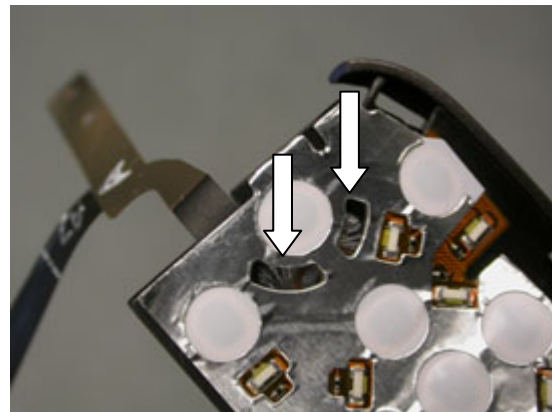
Obtain a new NeoBon Flex.

Obtain a new Camera.

Insert the camera into the housing in the NeoBon flex by aligning the camera tab with the notch.



Line the holes of the new NeoBon flex up with the slots in the speaker box.

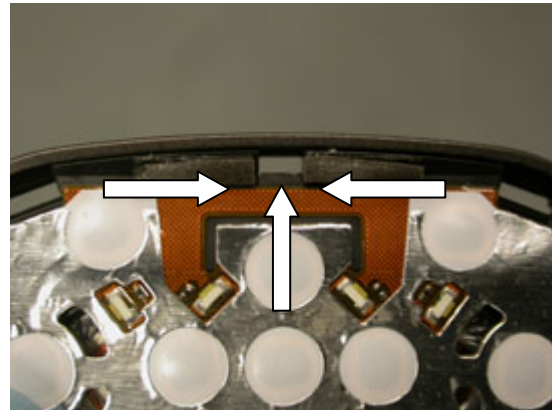


Smooth the flex out over the speaker box and press for several seconds to form a good adhesive bond.

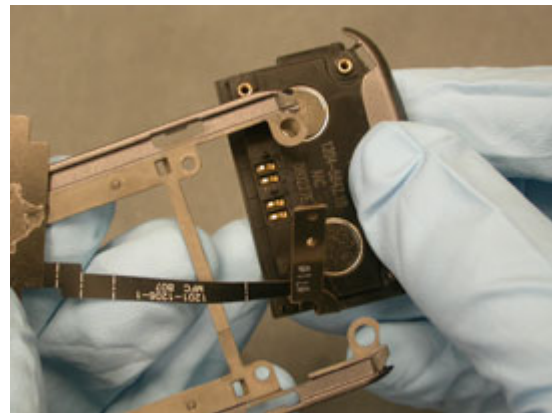




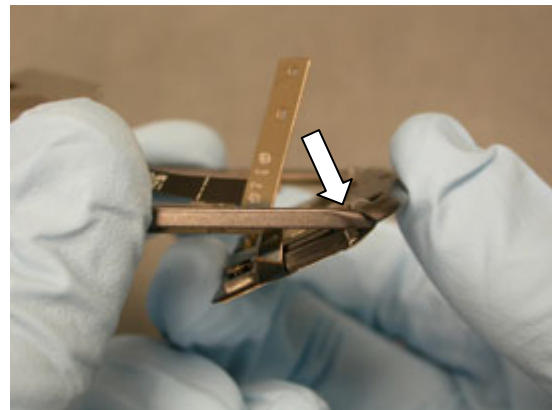
Install new Speaker Box Pads as shown. Line the corners of the pads up with the cut-out in the speaker box and the edge of the NeoBon flex.



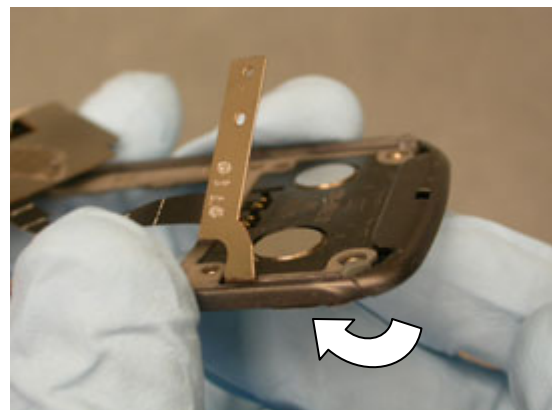
Position the NeoBon flex and front frame as shown.



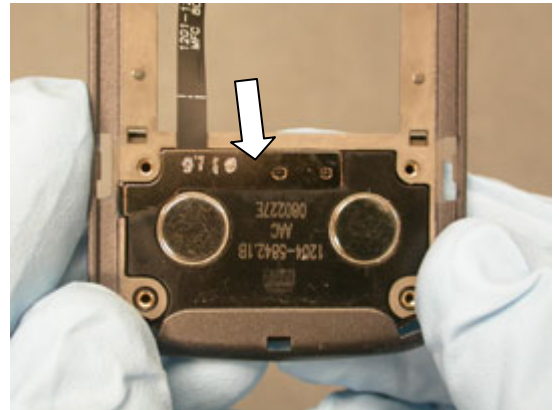
Snap the bottom edge of the speaker box onto the front frame.



Rotate the top of the speaker box up to the frame.

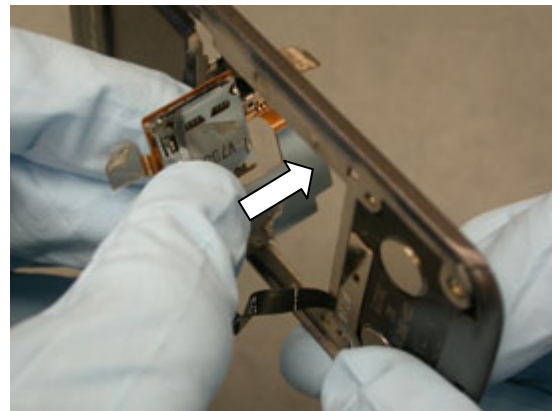


Fold the metal tab down onto the speaker box and snap it in place.



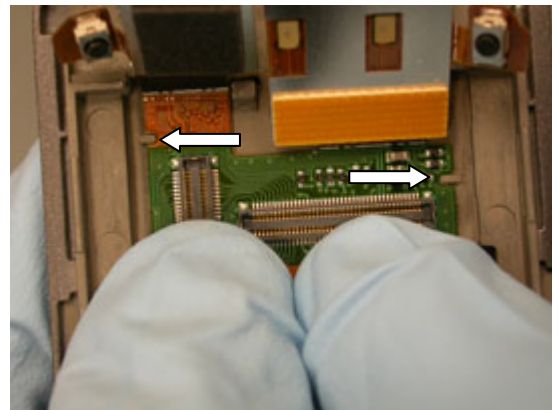
Pass the upper portion of the NeoBon flex through the frame to the other side.

NOTE: Before pressing the NeoBon flex in position, check so there isn't any adhesives left on the front frame. In that case remove them.



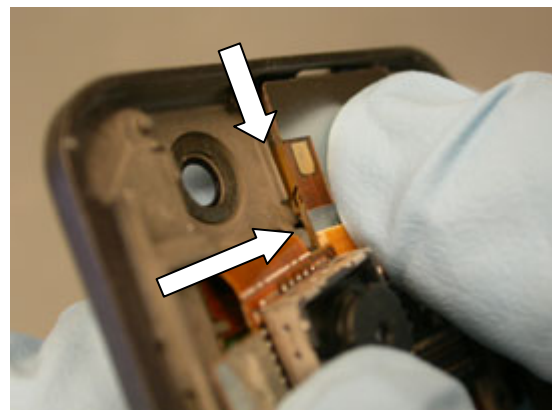
Line the two notches in the upper portion of the NeoBon flex up with the tabs in the frame.

Press the connector portion of the NeoBon flex in place so that a good adhesive bond forms.



Push the bottom of the M2 reader up against the raised guide on the frame and lay the M2 reader down onto the frame between the frame features.

Check to make sure the M2 reader is correctly positioned in its opening



Lay the right game key portion of the flex in place and press it down so that a good adhesive bond forms.



Complete 3.1.1-3.1.6 of the reassembly procedure.

Complete 3.3.1-3.3.3 of the reassembly procedure.

4.24 RF Plug Replacement

Complete 2.1.1-2.1.2 of the disassembly procedure.

Removal

Slide the round tipped tweezers under the upper back cover and push the RF Plug up.



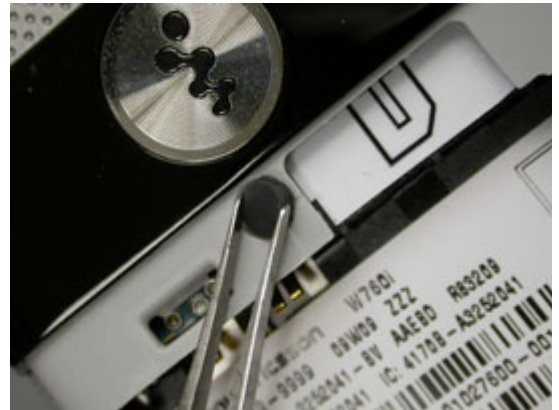
Grip the lifted portion of the RF plug and lift it out of the RF port.



Installation

Obtain a new RF plug.

Position the plug over the RF port so that the flat side of the plug is up.



Press the plug into place.



Complete 3.3.2-3.3.3 of the reassembly procedure.

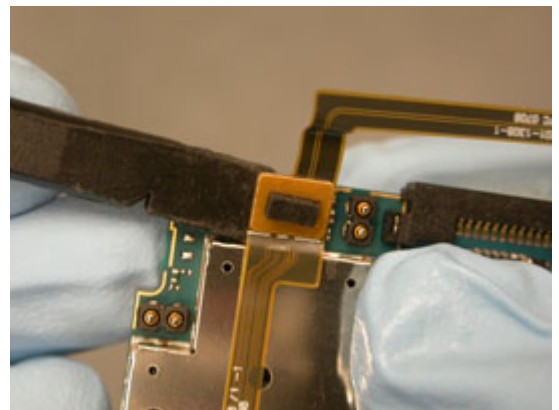
4.25 Side Key Flex Replacement

Complete 2.1.1-2.1.3 of the disassembly procedure.

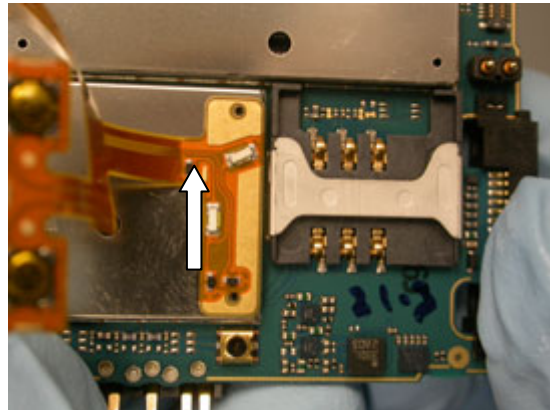
Complete 2.2.1-2.2.6 of the disassembly procedure.

Removal

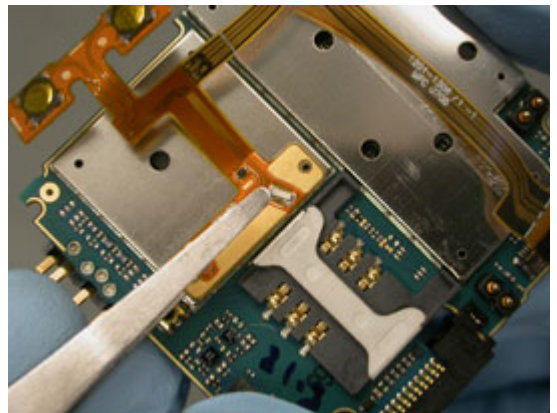
Pry up the connector using a pry tool.



Peel up the flex until you reach the stiff part.



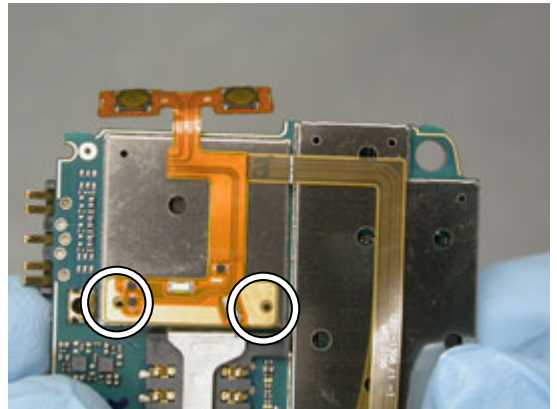
Pry up the flex using the round tipped tweezers.



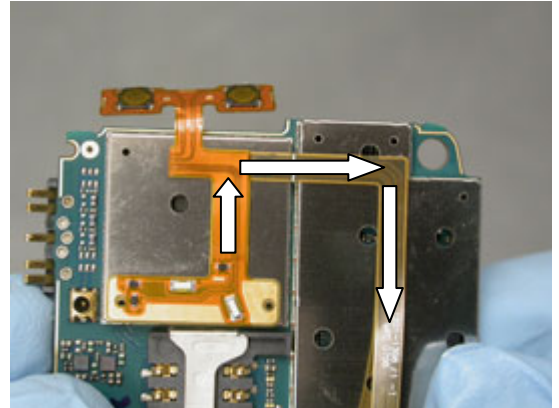
Installation

Obtain a new Side Key Flex.

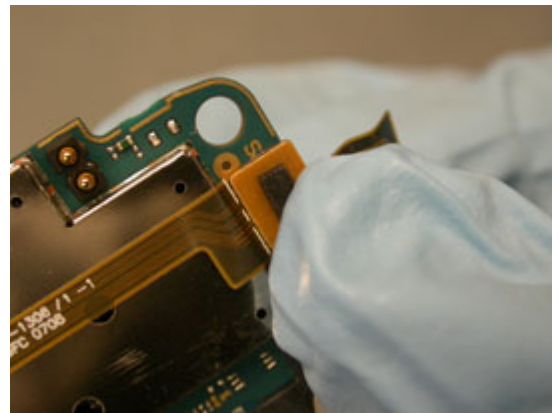
Using the alignment holes indicated, position the stiff portion of the side key flex on the board.



Smooth the flex out over the board as shown.



Plug the flex connector into the board.



Complete 3.2.1-3.2.6 of the reassembly procedure.

Complete 3.3.1-3.3.3 of the reassembly procedure.

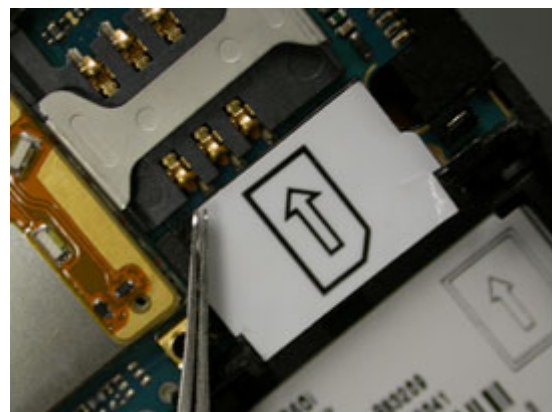
4.26 SIM Label Replacement

Complete 2.1.1-2.1.2 of the disassembly procedure.

Complete 2.2.1 of the disassembly procedure.

Removal

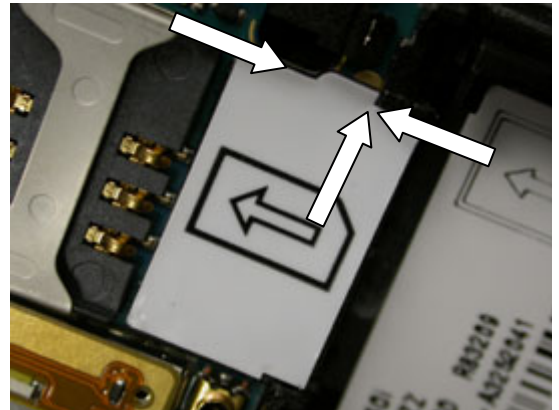
Use round tipped tweezers to peel up the SIM label and remove it.



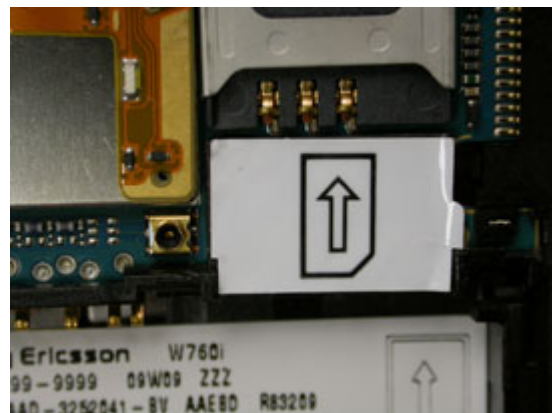
Installation

Obtain a new SIM Label.

Line the right edge of the SIM label up with the features shown.



Smooth the label over the surface and press to form a good adhesive bond.



Complete 3.2.6 of the reassembly procedure.

Complete 3.3.2-3.3.3 of the reassembly procedure.

4.27 Speaker Box Replacement

Complete 2.1.1-2.1.2 of the disassembly procedure.

Complete 2.3.1-2.3.6 of the disassembly procedure.

Complete 4.23 NeoBon Flex Replacement but replace the Speaker Box as well as the NeoBon Flex.

Complete 3.1.1-3.1.6 of the reassembly procedure.

Complete 3.3.2-3.3.3 of the reassembly procedure.

4.28 Upper Back Cover Replacement

Complete 2.1.1-2.1.2 of the disassembly procedure.

Complete 2.2.1 of the disassembly procedure.

Obtain a new Upper Back Cover.

Complete 3.2.6 of the reassembly procedure.

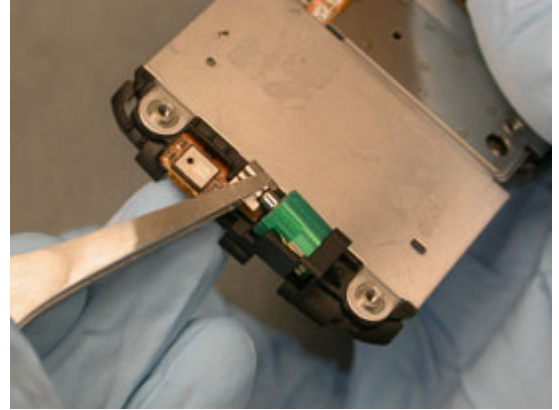
Complete 3.3.2-3.3.3 of the reassembly procedure.

4.29 Vibrator Replacement

Complete 2.1.1-2.2.5 of the disassembly procedure.

Removal

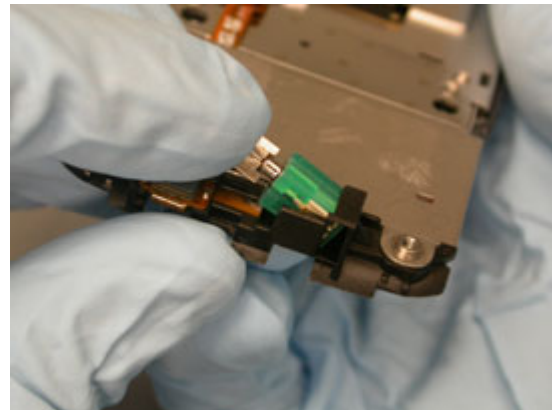
Grip the vibrator head with round tipped tweezers and remove it.



Installation

Obtain a new Vibrator.

Place the vibrator in its socket and push it into place.



Complete 3.2.2-3.3.3 of the reassembly procedure.

4.30 Volume Key Replacement

Complete 2.1.1-2.2.2 of the disassembly procedure.

Obtain a new Volume Key.

Complete 3.2.5-3.3.3 of the reassembly procedure.

4.31 Walkman Key Replacement

Complete 2.1.1-2.2.5 of the disassembly procedure.

Lift the walkman key portion of the side key flex out using round tipped tweezers.



Remove the walkman key using round tipped tweezers.



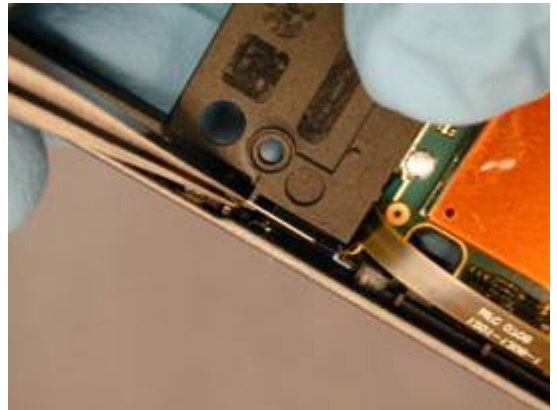
Installation

Obtain a new Walkman Key.

Orient the key as shown and insert it into its slot.



Place the walkman key portion of the side key flex back into place using round tipped tweezers.



Complete 3.2.2-3.3.3 of the reassembly procedure.

5 Country of Origin Barcodes for Brazil/VIVO Labels

Below is a link to a list of countries of origin. If you are printing a Brazil or VIVO label, scan the barcode corresponding to the correct country of origin for the “Fabricado” field.

6 Revision History

Rev.	Date	Changes / Comments
1	May 29, 2008	Initial Draft
2	June 7, 2008	Added Brazilian label section
3	July 10, 2008	Updated front and back cover removal/installation
4	July 23, 2008	Added replacement sections for: 1. SIM Label 2. Camera 3. RF Plug Other minor updates.
5	2009-03-02	Chapter 4.23 updated
6	2009-07-09	Updated with Phillips 000